

# Anti-WTAP Antibody (R3T43)

## Summary

---

<b>Catalog No.</b>	RHG96902
<b>Clone ID</b>	R3T43
<b>Host species</b>	Mouse
<b>Tested applications</b>	ELISA: 1:10000, FCM: 1:200-1:400, IF: 1:50-1:500, IHC: 1:100-1:500, WB: 1:500-1:2000
<b>Species reactivity</b>	Human, Mouse, Rat, Rabbit, Monkey
<b>Form</b>	Liquid
<b>Storage buffer</b>	0.01M PBS, pH 7.4, 0.05% Sodium Azide.
<b>Concentration</b>	1 mg/ml
<b>Purity</b>	>95% as determined by SDS-PAGE.
<b>Clonality</b>	Monoclonal
<b>Isotype</b>	IgG1
<b>Applications</b>	ELISA, FCM, IF, IHC, WB
<b>Target</b>	Wilms tumor 1-associating protein, Pre-mRNA-splicing regulator WTAP, hFL(2)D, WT1-associated protein, Female-lethal(2)D homolog, KIAA0105, WTAP
<b>Purification</b>	Protein A/G purified from cell culture supernatant.
<b>Endotoxin level</b>	Please contact with the lab for this information.
<b>Accession</b>	Q15007

**Stability and Storage**

Use a manual defrost freezer and avoid repeated freeze-thaw cycles.

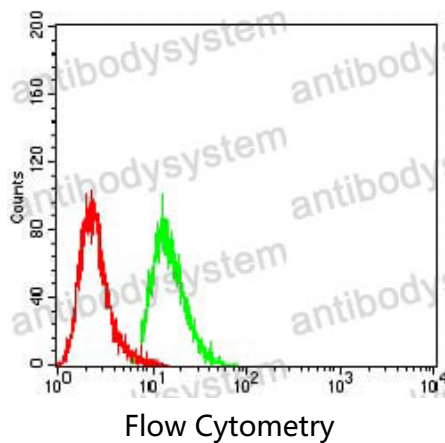
Store at 4°C short term (1-2 weeks). Store at -20°C 12 months. Store at -80°C long term.

**Note**

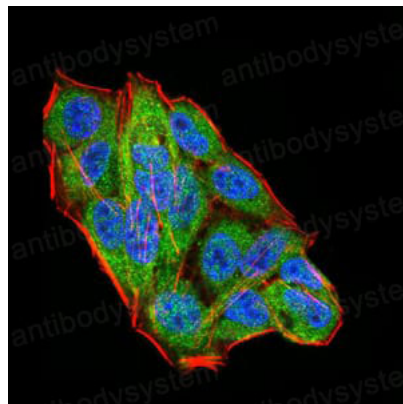
For research use only.

**Data Image**

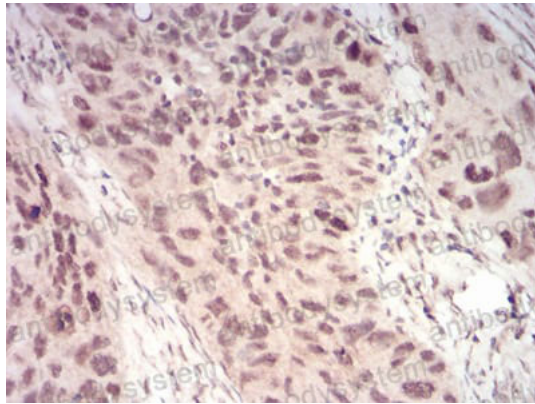
---



Flow cytometric analysis of A549 cells using WTAP mouse mAb (green) and negative control (red).

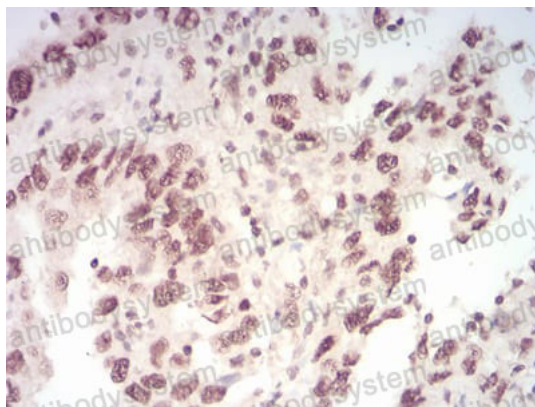


Immunofluorescence analysis of HeLa cells using WTAP mouse mAb (green). Blue: DRAQ5 fluorescent DNA dye. Red: Actin filaments have been labeled with Alexa Fluor- 555 phalloidin.



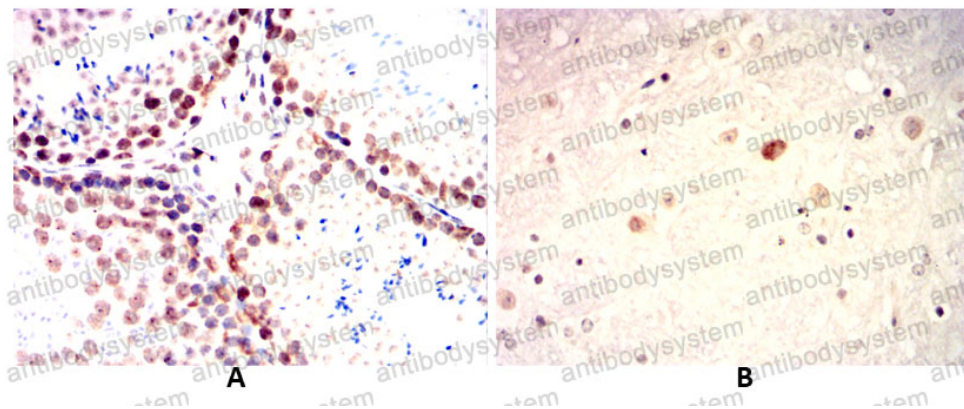
Immunohistochemical

Immunohistochemical analysis of paraffin-embedded human cervical cancer tissues using WTAP mouse mAb with DAB staining.



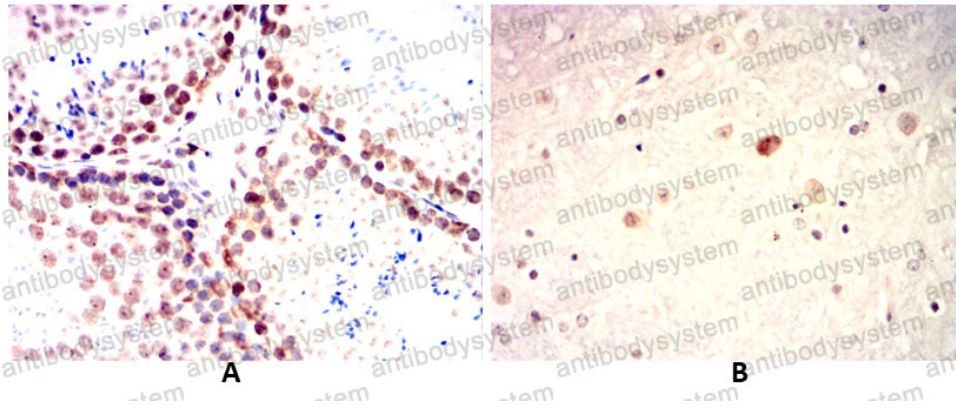
Immunohistochemical

Immunohistochemical analysis of paraffin-embedded human endometrial cancer tissues using WTAP mouse mAb with DAB staining.



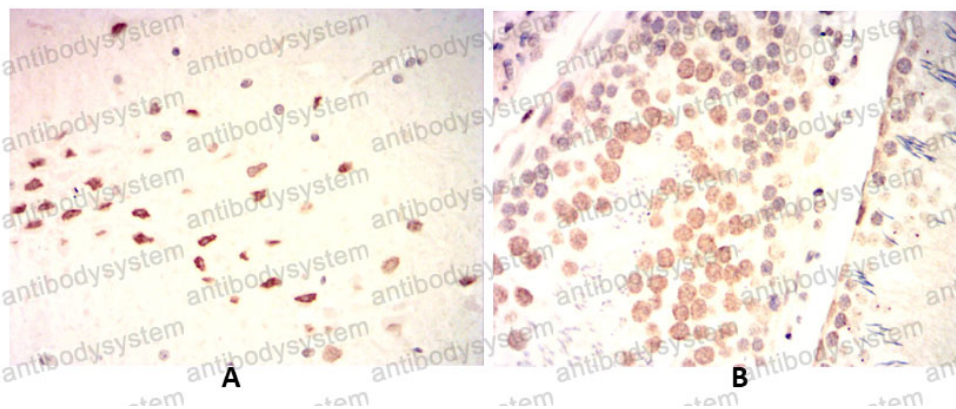
Immunohistochemical

Immunohistochemical analysis of paraffin-embedded Mouse testicles(A) Mouse cerebellum(B) using WTAP mouse mAb with DAB staining.



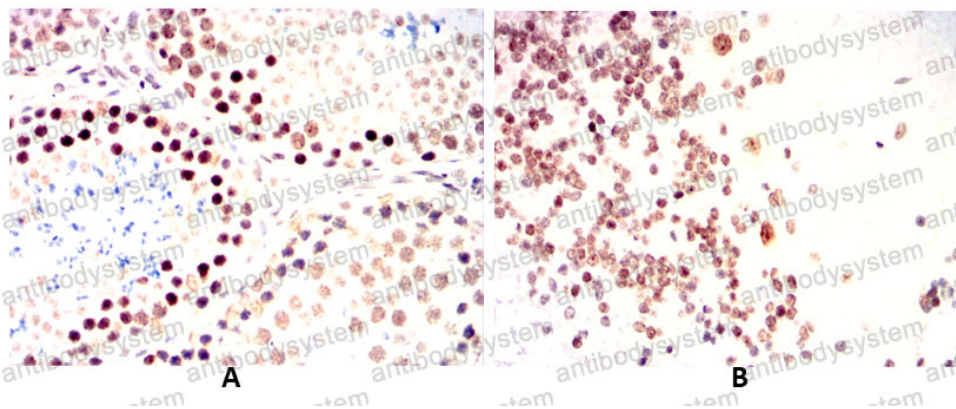
Immunohistochemical analysis of paraffin-embedded Mouse testicles(A) Mouse cerebellum(B) using WTAP mouse mAb with DAB staining.

Immunohistochemical



Immunohistochemical analysis of paraffin-embedded Rat brain(A) Rat testicles(B) using WTAP mouse mAb with DAB staining.

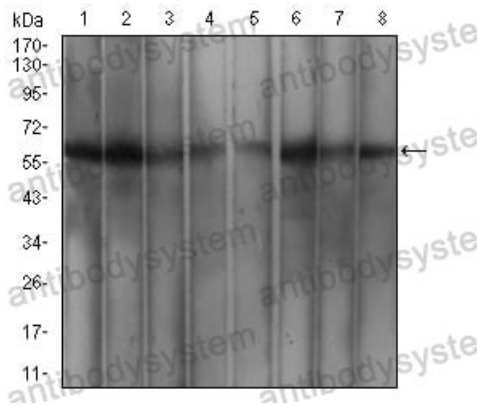
Immunohistochemical



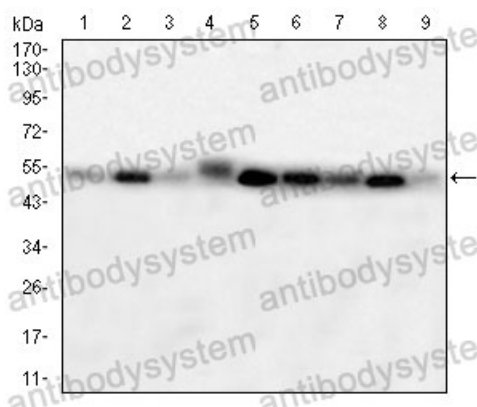
Immunohistochemical analysis of paraffin-embedded Rabbit testicles(A) Rabbit cerebellum(b) using WTAP mouse mAb with DAB staining.

Immunohistochemical





Western blot



Western blot

Western blot analysis using WTAP mouse mAb against MCF-7 (1), HeLa (2), K562 (3), Hek293 (4), A549 (5), HepG2 (6), Jurkat (7), and Cos7 (8) cell lysate.

Western blot analysis using WTAP mouse mAb against PC-12(1)NIH/3T3(2) NRK(3) C2C12 (4) C6(5) L1210(6) F9(7) COS7(8) CHO3D10(9) cell lysate.