

Anti-CASP8 Antibody (R3T33)

Summary

Catalog No.	RHG90203
Clone ID	R3T33
Host species	Mouse
Tested applications	ELISA: 1:10000, FCM: 1:200-1:400, IHC: 1:200-1:1000, WB: 1:500-1:2000
Species reactivity	Human, Mouse, Rat, Monkey
Form	Liquid
Storage buffer	0.01M PBS, pH 7.4, 0.05% Sodium Azide.
Concentration	1 mg/ml
Purity	>95% as determined by SDS-PAGE.
Clonality	Monoclonal
Isotype	IgG1
Applications	ELISA, FCM, IHC, WB
Target	CAP4, MCH5, FADD-homologous ICE/ced-3-like protease, FLICE, Apoptotic cysteine protease, MORT1-associated ced-3 homolog, MACH, FADD-like ICE, ICE-like apoptotic protease 5, CASP8, CASP-8, Caspase-8, Apoptotic protease Mch-5
Purification	Protein A/G purified from cell culture supernatant.
Endotoxin level	Please contact with the lab for this information.
Accession	Q14790

Stability and Storage

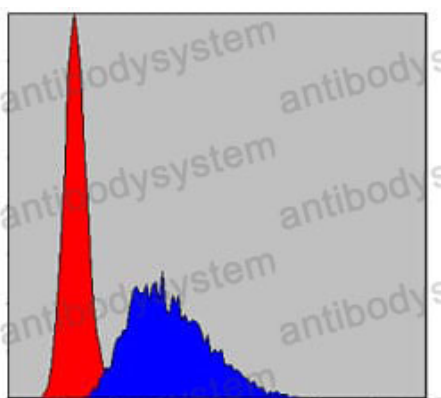
Use a manual defrost freezer and avoid repeated freeze-thaw cycles.

Store at 4°C short term (1-2 weeks). Store at -20°C 12 months. Store at -80°C long term.

Note

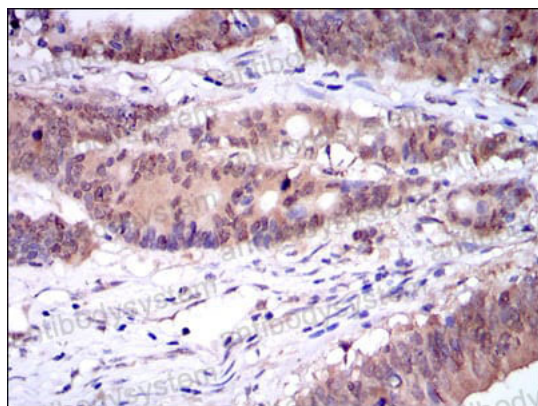
For research use only.

Data Image



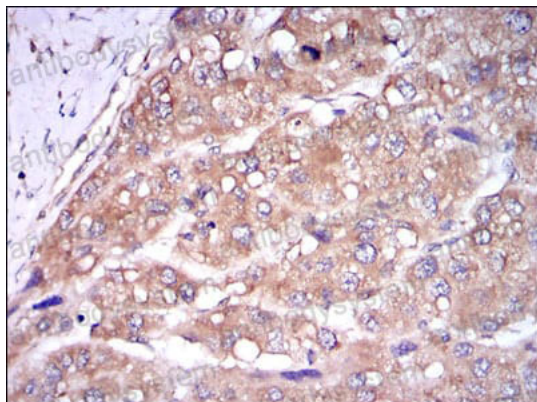
Flow Cytometry

Flow cytometric analysis of NIH/3T3 cells using CASP8 mouse mAb (blue) and negative control (red).



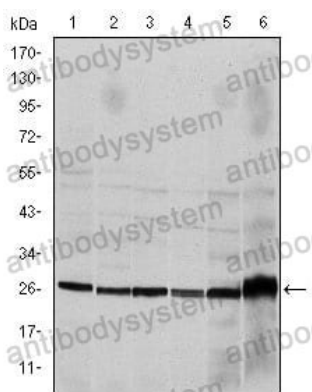
Immunohistochemical

Immunohistochemical analysis of paraffin-embedded human colon cancer tissues using CASP8 mouse mAb with DAB staining.



Immunohistochemical analysis of paraffin-embedded human liver cancer tissues using CASP8 mouse mAb with DAB staining.

Immunohistochemical



Western blot analysis using CASP8 mouse mAb against Hela (1), Jurkat (2), THP-1 (3), NIH/3T3 (4), Cos7 (5) and PC-12 (6) cell lysate.

Western blot