

Anti-SMC1A Antibody (R3T30)

Summary

Catalog No.	RHG87004
Clone ID	R3T30
Host species	Mouse
Tested applications	IF: 1:50-1:200, WB: 1:500-1:1000
Species reactivity	Human
Form	Liquid
Storage buffer	0.01M PBS, pH 7.4, 0.5% BSA, 0.05% Sodium Azide and 50% Glycerol.
Concentration	1 mg/ml
Purity	>95% as determined by SDS-PAGE.
Clonality	Monoclonal
Isotype	IgG1
Applications	IF, WB
Target	DXS423E, SB1.8, KIAA0178, Structural maintenance of chromosomes protein 1A, SMC-1A, Sb1.8, SMC1, SMC1A, SMC protein 1A, SMC1L1, SMC-1-alpha
Purification	Protein A/G purified from cell culture supernatant.
Endotoxin level	Please contact with the lab for this information.
Accession	Q14683

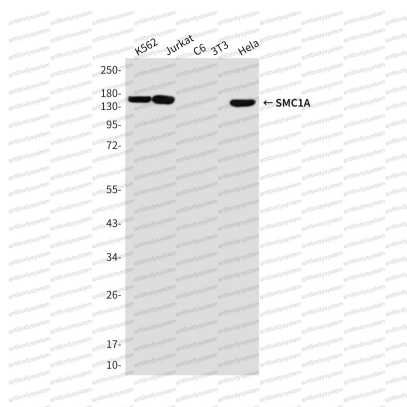
Stability and Storage

Use a manual defrost freezer and avoid repeated freeze-thaw cycles.

Store at 4°C short term (1-2 weeks). Store at -20°C 12 months. Store at -80°C long term.

Note

For research use only.

Data Image

Western blot

Western blot analysis of SMC1A(Cterm) in K562, Jurkat, C6, 3T3 and Hela lysates using SMC1A (Nterminus) antibody.