

Anti-MELK Antibody (R3T28)

Summary

Catalog No.	RHG86803
Clone ID	R3T28
Host species	Mouse
Tested applications	ELISA: 1:10000, FCM: 1:200-1:400, IF: 1:200-1:1000, IHC: 1:200-1:1000
Species reactivity	Human
Form	Liquid
Storage buffer	0.01M PBS, pH 7.4, 0.05% Sodium Azide.
Concentration	1 mg/ml
Purity	>95% as determined by SDS-PAGE.
Clonality	Monoclonal
Isotype	IgG2a
Applications	ELISA, FCM, IF, IHC
Target	Tyrosine-protein kinase MELK, Maternal embryonic leucine zipper kinase, Protein kinase Eg3, hMELK, MELK, Protein kinase PK38, hPK38, pEg3 kinase, KIAA0175
Purification	Protein A/G purified from cell culture supernatant.
Endotoxin level	Please contact with the lab for this information.
Accession	Q14680

Stability and Storage

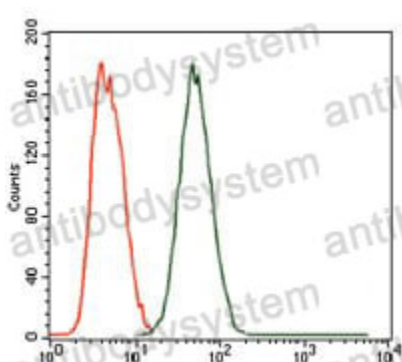
Use a manual defrost freezer and avoid repeated freeze-thaw cycles.

Store at 4°C short term (1-2 weeks). Store at -20°C 12 months. Store at -80°C long term.

Note

For research use only.

Data Image



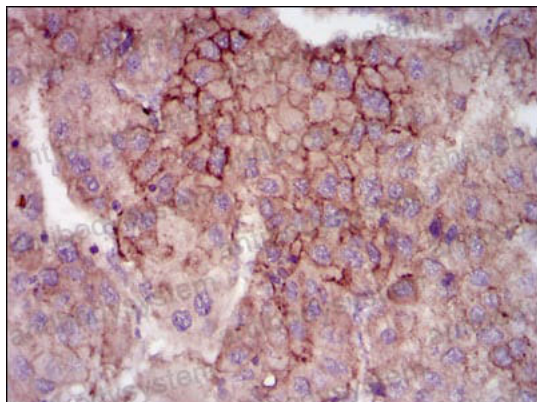
Flow Cytometry

Flow cytometric analysis of MCF-7 cells using MELK mouse mAb (green) and negative control (red).



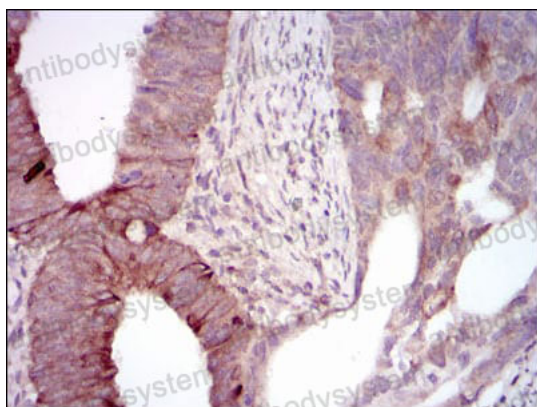
Immunofluorescence

Immunofluorescence analysis of HepG2 cells using MELK mouse mAb (green). Blue: DRAQ5 fluorescent DNA dye. Red: Actin filaments have been labeled with Alexa Fluor-555 phalloidin.



Immunohistochemical

Immunohistochemical analysis of paraffin-embedded human liver cancer tissues using MELK mouse mAb with DAB staining.



Immunohistochemical

Immunohistochemical analysis of paraffin-embedded human rectum cancer tissues using MELK mouse mAb with DAB staining.