

Anti-NEDD9 Antibody (R3T24)

Summary

Catalog No.	RHG81001
Clone ID	R3T24
Host species	Mouse
Tested applications	ELISA: 1:10000, FCM: 1:200-1:400, IF: 1:200-1:1000, WB: 1:500-1:2000
Species reactivity	Human, Rat
Form	Liquid
Storage buffer	0.01M PBS, pH 7.4, 0.05% Sodium Azide.
Concentration	1 mg/ml
Purity	>95% as determined by SDS-PAGE.
Clonality	Monoclonal
Isotype	IgG1
Applications	ELISA, FCM, IF, WB
Target	CRK-associated substrate-related protein, Neural precursor cell expressed developmentally down-regulated protein 9, Enhancer of filamentation 1, CASL, CASS2, NEDD-9, CAS-L, CasL, hEF1, NEDD9, Cas scaffolding protein family member 2, Renal carcinoma antigen NY-REN-12, p105
Purification	Protein A/G purified from cell culture supernatant.
Endotoxin level	Please contact with the lab for this information.
Accession	Q14511

Stability and Storage

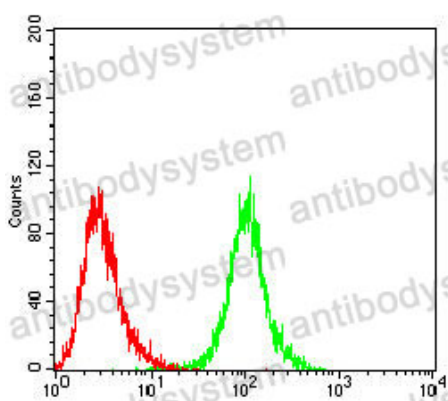
Use a manual defrost freezer and avoid repeated freeze-thaw cycles.

Store at 4°C short term (1-2 weeks). Store at -20°C 12 months. Store at -80°C long term.

Note

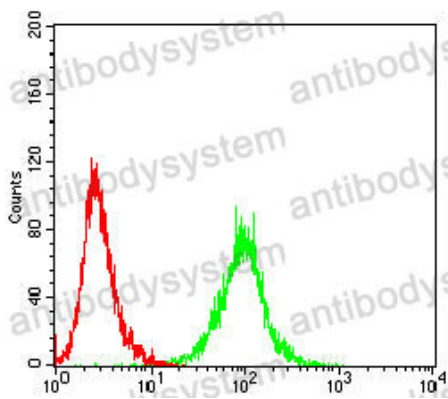
For research use only.

Data Image



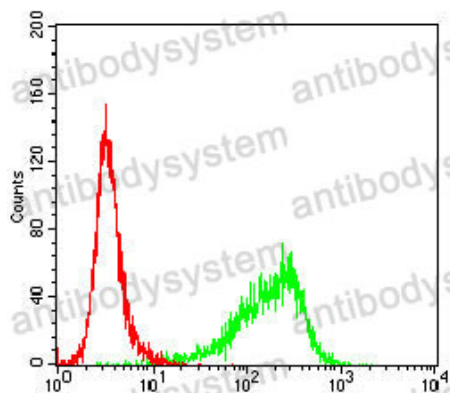
Flow Cytometry

Flow cytometric analysis of HepG2 cells using NEDD9 mouse mAb (green) and negative control (red).



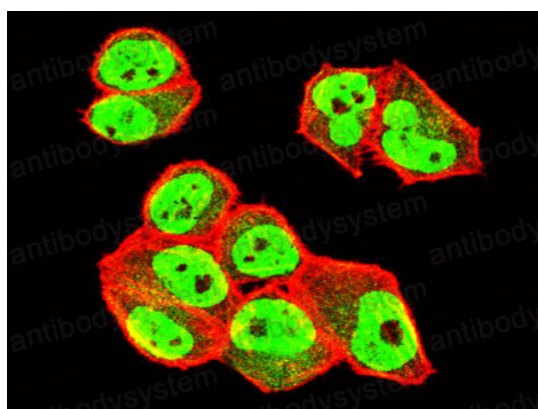
Flow Cytometry

Flow cytometric analysis of Jurkat cells using NEDD9 mouse mAb (green) and negative control (red).



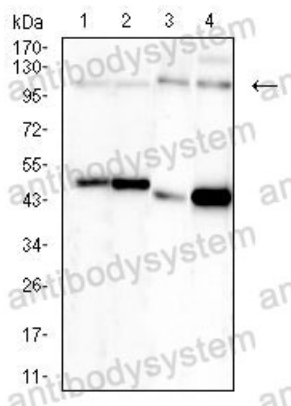
Flow Cytometry

Flow cytometric analysis of K562 cells using NEDD9 mouse mAb (green) and negative control (red).



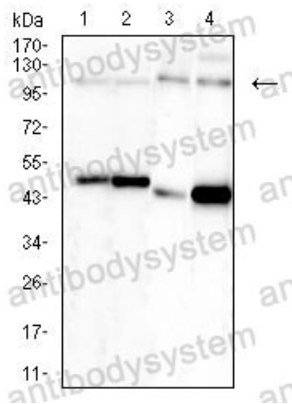
Immunofluorescence

Immunofluorescence analysis of HeLa cells using NEDD9 mouse mAb (green). Blue: DRAQ5 fluorescent DNA dye. Red: Actin filaments have been labeled with Alexa Fluor-555 phalloidin.



Western blot

Western blot analysis using NEDD9 mouse mAb against MCF-7 (1), HeLa (2), C2C12 (3), and Hek293 (4) cell lysate.



Western blot

Western blot analysis using NEDD9 mouse mAb against MCF-7 (1), HeLa (2), C2C12 (3), and Hek293 (4) cell lysate.