

Anti-BECN1 Antibody (R3T23)

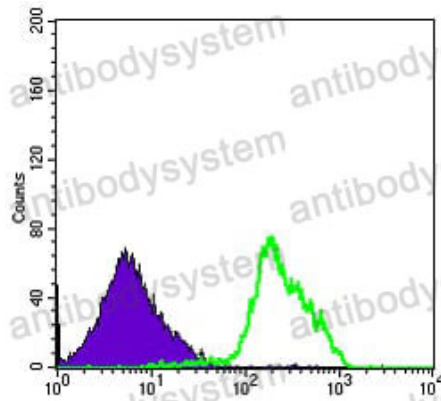
Summary

| | |
|------------------------------|---|
| Catalog No. | RHG80202 |
| Clone ID | R3T23 |
| Host species | Mouse |
| Tested applications | ELISA: 1:10000, FCM: 1:200-1:400, IHC: 1:200-1:1000, WB: 1:500-1:2000 |
| Species reactivity | Human |
| Form | Liquid |
| Storage buffer | 0.01M PBS, pH 7.4, 0.05% Sodium Azide. |
| Concentration | 1 mg/ml |
| Purity | >95% as determined by SDS-PAGE. |
| Clonality | Monoclonal |
| Isotype | IgG1 |
| Applications | ELISA, FCM, IHC, WB |
| Target | BECN1, Beclin-1, Coiled-coil myosin-like BCL2-interacting protein, Protein GT197, GT197 |
| Purification | Protein A/G purified from cell culture supernatant. |
| Endotoxin level | Please contact with the lab for this information. |
| Accession | Q14457 |
| Stability and Storage | Use a manual defrost freezer and avoid repeated freeze-thaw cycles. Store at 4°C short term (1-2 weeks). Store at -20°C 12 months. Store at -80°C long term. |

Note

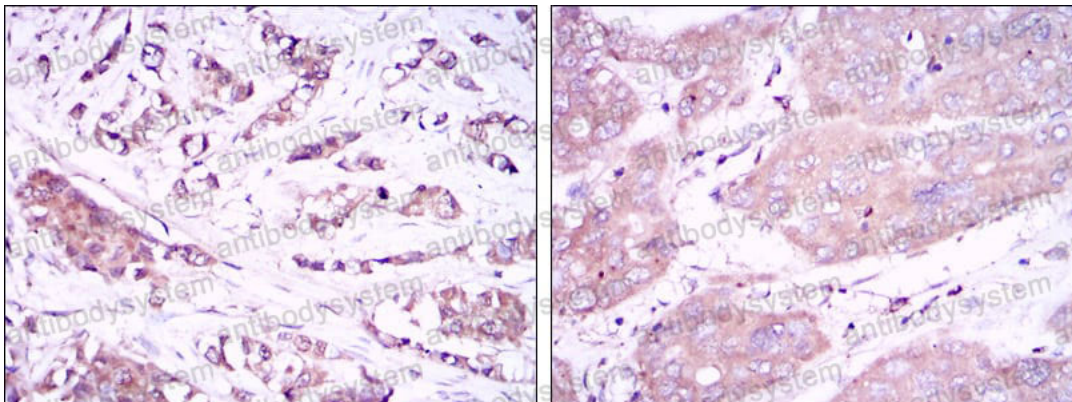
For research use only.

Data Image



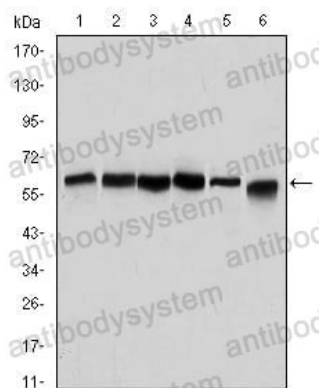
Flow Cytometry

Flow cytometric analysis of RAJI cells using BECN1 mouse mAb (green) and negative control (purple).



Immunohistochemical

Immunohistochemical analysis of paraffin-embedded human breast cancer tissues (left) and liver cancer tissues (right) using BECN1 mouse mAb with DAB staining.



Western blot

Western blot analysis using BECN1 mouse mAb against Hela (1), A431 (2), MCF-7 (3), RAJI (4), Jurkat (5) and SKBR-3 (6) cell lysate.