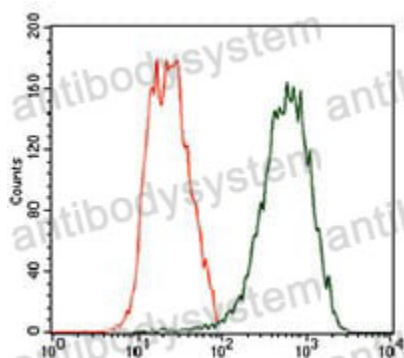


Anti-TUBB2A Antibody (R3T02)

Summary

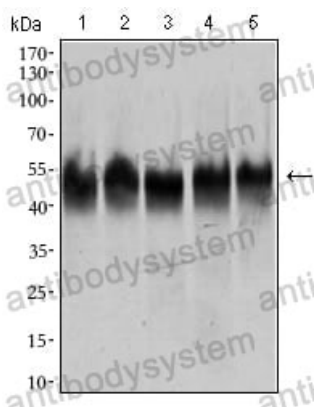
Catalog No.	RHG66501
Clone ID	R3T02
Host species	Mouse
Tested applications	ELISA: 1:10000, FCM: 1:200-1:400, WB: 1:500-1:2000
Species reactivity	Human
Form	Liquid
Storage buffer	0.01M PBS, pH 7.4, 0.05% Sodium Azide.
Concentration	1 mg/ml
Purity	>95% as determined by SDS-PAGE.
Clonality	Monoclonal
Isotype	IgG1
Applications	ELISA, FCM, WB
Target	TUBB2A, TUBB2, Tubulin beta-2A chain, Tubulin beta class IIa
Purification	Protein A/G purified from cell culture supernatant.
Endotoxin level	Please contact with the lab for this information.
Accession	Q13885
Stability and Storage	Use a manual defrost freezer and avoid repeated freeze-thaw cycles. Store at 4°C short term (1-2 weeks). Store at -20°C 12 months. Store at -80°C long term.
Note	For research use only.

Data Image



Flow Cytometry

Flow cytometric analysis of HeLa cells using TUBB2A mouse mAb (green) and negative control (red).



Western blot

Western blot analysis using TUBB2A mouse mAb against HeLa (1), A549 (2), HEK293 (3), Jurkat (4) and PC-12 (5) cell lysate.