

Anti-CD166/ALCAM Antibody (R3S90)

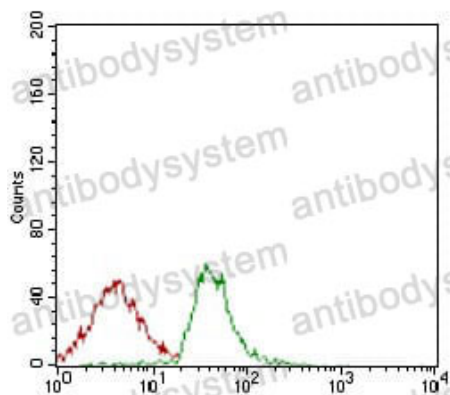
Summary

Catalog No.	RHG64005
Clone ID	R3S90
Host species	Mouse
Tested applications	ELISA: 1:10000, FCM: 1:200-1:400, IHC: 1:200-1:1000, WB: 1:500-1:2000
Species reactivity	Human, Mouse
Form	Liquid
Storage buffer	0.01M PBS, pH 7.4, 0.05% Sodium Azide.
Concentration	1 mg/ml
Purity	>95% as determined by SDS-PAGE.
Clonality	Monoclonal
Isotype	IgG2b
Applications	ELISA, FCM, IHC, WB
Target	Activated leukocyte cell adhesion molecule, MEMD, CD166 antigen, ALCAM, CD166
Purification	Protein A/G purified from cell culture supernatant.
Endotoxin level	Please contact with the lab for this information.
Accession	Q13740
Stability and Storage	Use a manual defrost freezer and avoid repeated freeze-thaw cycles. Store at 4°C short term (1-2 weeks). Store at -20°C 12 months. Store at -80°C long term.

Note

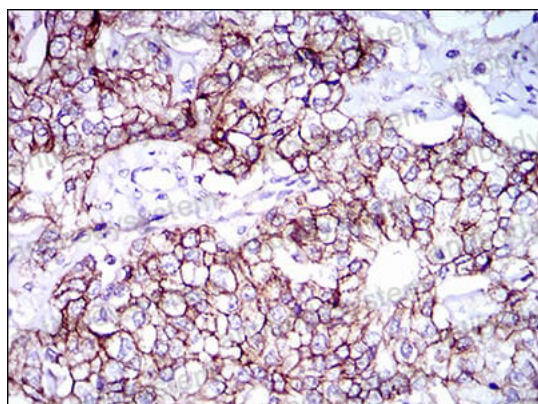
For research use only.

Data Image



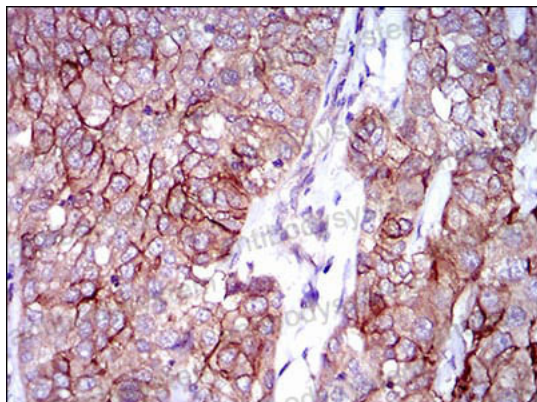
Flow Cytometry

Flow cytometric analysis of Jurkat cells using ALCAM mouse mAb (green) and negative control (red).



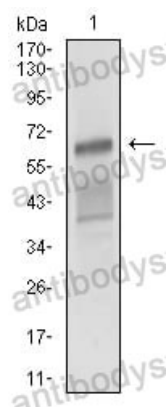
Immunohistochemical

Immunohistochemical analysis of paraffin-embedded human prostate cancer tissues using ALCAM mouse mAb with DAB staining.



Immunohistochemical

Immunohistochemical analysis of paraffin-embedded human bladder cancer tissues using ALCAM mouse mAb with DAB staining.



Western blot

Western blot analysis using ALCAM mouse mAb against NIH/3T3 cell lysate.