

Anti-CD166/ALCAM Antibody (R3S89)

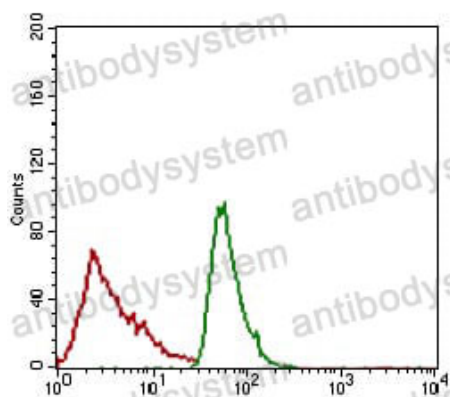
Summary

Catalog No.	RHG64004
Clone ID	R3S89
Host species	Mouse
Tested applications	ELISA: 1:10000, FCM: 1:200-1:400, IF: 1:200-1:1000, IHC: 1:200-1:1000
Species reactivity	Human
Form	Liquid
Storage buffer	0.01M PBS, pH 7.4, 0.05% Sodium Azide.
Concentration	1 mg/ml
Purity	>95% as determined by SDS-PAGE.
Clonality	Monoclonal
Isotype	IgG2a
Applications	ELISA, FCM, IF, IHC
Target	Activated leukocyte cell adhesion molecule, MEMD, CD166 antigen, ALCAM, CD166
Purification	Protein A/G purified from cell culture supernatant.
Endotoxin level	Please contact with the lab for this information.
Accession	Q13740
Stability and Storage	Use a manual defrost freezer and avoid repeated freeze-thaw cycles. Store at 4°C short term (1-2 weeks). Store at -20°C 12 months. Store at -80°C long term.

Note

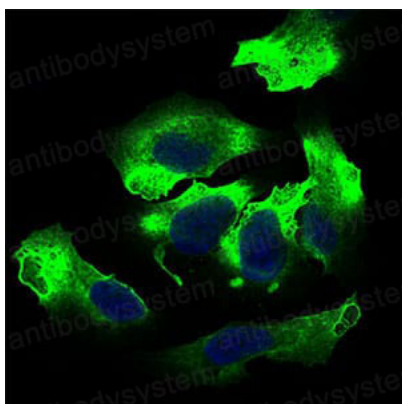
For research use only.

Data Image



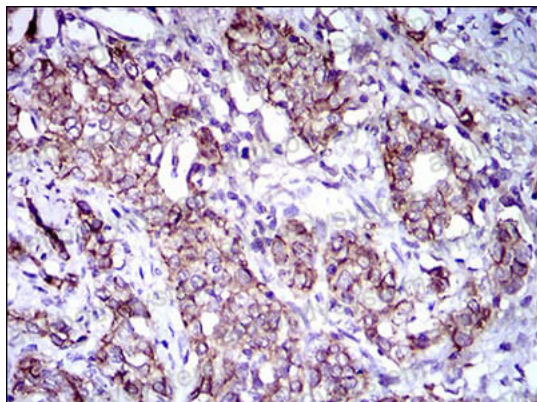
Flow Cytometry

Flow cytometric analysis of JURKAT cells using ALCAM mouse mAb (green) and negative control (red).



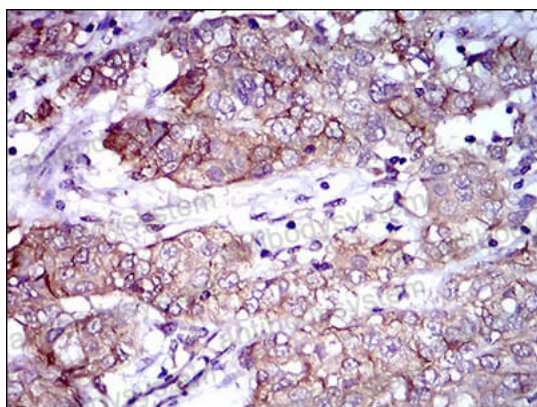
Immunofluorescence

Immunofluorescence analysis of HeLa cells using ALCAM mouse mAb (green). Blue: DRAQ5 fluorescent DNA dye.



Immunohistochemical

Immunohistochemical analysis of paraffin-embedded human cervical cancer tissues using ALCAM mouse mAb with DAB staining.



Immunohistochemical

Immunohistochemical analysis of paraffin-embedded human bladder cancer tissues using ALCAM mouse mAb with DAB staining.