

# Anti-CD166/ALCAM Antibody (R3S88)

## Summary

---

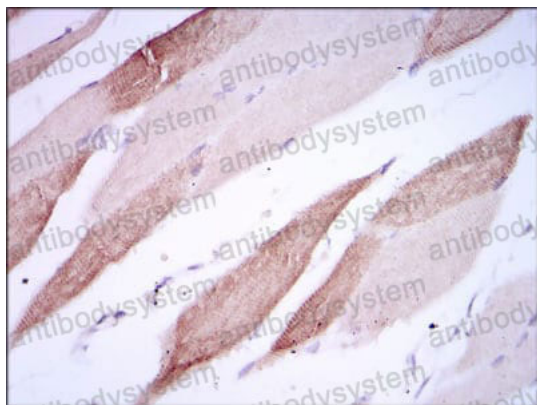
<b>Catalog No.</b>	RHG64003
<b>Clone ID</b>	R3S88
<b>Host species</b>	Mouse
<b>Tested applications</b>	ELISA: 1:10000, IHC: 1:200-1:1000, WB: 1:500-1:2000
<b>Species reactivity</b>	Human
<b>Form</b>	Liquid
<b>Storage buffer</b>	0.01M PBS, pH 7.4, 0.05% Sodium Azide.
<b>Concentration</b>	1 mg/ml
<b>Purity</b>	>95% as determined by SDS-PAGE.
<b>Clonality</b>	Monoclonal
<b>Isotype</b>	IgG1
<b>Applications</b>	ELISA, IHC, WB
<b>Target</b>	Activated leukocyte cell adhesion molecule, MEMD, CD166 antigen, ALCAM, CD166
<b>Purification</b>	Protein A/G purified from cell culture supernatant.
<b>Endotoxin level</b>	Please contact with the lab for this information.
<b>Accession</b>	Q13740
<b>Stability and Storage</b>	Use a manual defrost freezer and avoid repeated freeze-thaw cycles. Store at 4°C short term (1-2 weeks). Store at -20°C 12 months. Store at -80°C long term.

**Note**

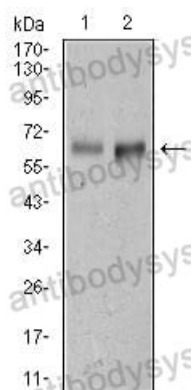
For research use only.

## Data Image

---

**Immunohistochemical**

Immunohistochemical analysis of paraffin-embedded human striated muscle tissues using AICAM mouse mAb with DAB staining.

**Western blot**

Western blot analysis using AICAM mouse mAb against L1210 (1) cell lysate, and Mouse spleen (2) tissue lysate.