

# Anti-CDw210a/IL10RA Antibody (R3S85)

## Summary

---

|                            |   |
|----------------------------|---|
| <b>Catalog No.</b>         | RHG62902  |
| <b>Clone ID</b>            | R3S85   |
| <b>Host species</b>        | Mouse   |
| <b>Tested applications</b> | ELISA: 1:10000, FCM: 1:200-1:400  |
| <b>Species reactivity</b>  | Human   |
| <b>Form</b>                | Liquid  |
| <b>Storage buffer</b>      | 0.01M PBS, pH 7.4, 0.05% Sodium Azide.  |
| <b>Concentration</b>       | 1 mg/ml   |
| <b>Purity</b>              | >95% as determined by SDS-PAGE.   |
| <b>Clonality</b>           | Monoclonal  |
| <b>Isotype</b>             | IgG1  |
| <b>Applications</b>        | ELISA, FCM  |
| <b>Target</b>              | IL-10 receptor subunit alpha, IL-10R1, Interleukin-10 receptor subunit alpha, Interleukin-10 receptor subunit 1, CD210, IL10RA, CDw210a, IL-10R subunit alpha, IL-10R subunit 1, IL10R, IL-10RA |
| <b>Purification</b>        | Protein A/G purified from cell culture supernatant.   |
| <b>Endotoxin level</b>     | Please contact with the lab for this information.   |
| <b>Accession</b>           | Q13651  |

**Stability and Storage**

Use a manual defrost freezer and avoid repeated freeze-thaw cycles.

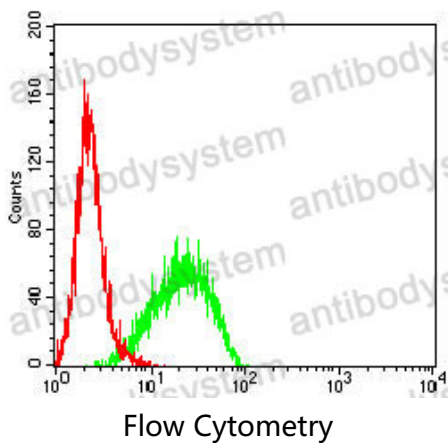
Store at 4°C short term (1-2 weeks). Store at -20°C 12 months. Store at -80°C long term.

**Note**

For research use only.

**Data Image**

---



Flow cytometric analysis of THP-1 cells using CD210 mouse mAb (green) and negative control (red).