

Anti-PKD2 Antibody (R3S80)

Summary

Catalog No.	RHG58801
Clone ID	R3S80
Host species	Mouse
Tested applications	IHC: 1:500-1:1000, WB: 1:500-1:1000
Species reactivity	Human, Mouse
Form	Liquid
Storage buffer	0.01M PBS, pH 7.4, 0.05% Sodium Azide.
Concentration	1 mg/ml
Purity	>95% as determined by SDS-PAGE.
Clonality	Monoclonal
Isotype	IgG1
Applications	IHC, WB
Target	Autosomal dominant polycystic kidney disease type II protein, TRPP2, PC2, Polycystin, Transient receptor potential cation channel subfamily P member 2, Polycystin-2, PKD2, Polycystic kidney disease 2 protein, R48321
Purification	Protein A/G purified from cell culture supernatant.
Endotoxin level	Please contact with the lab for this information.
Accession	Q13563

Stability and Storage

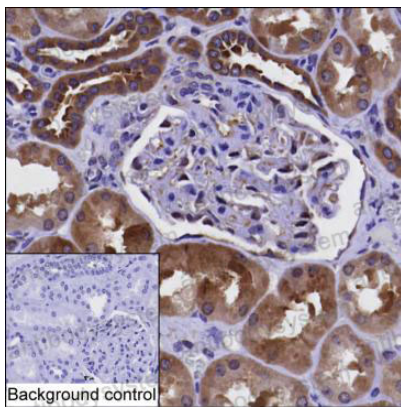
Use a manual defrost freezer and avoid repeated freeze-thaw cycles.

Store at 4°C short term (1-2 weeks). Store at -20°C 12 months. Store at -80°C long term.

Note

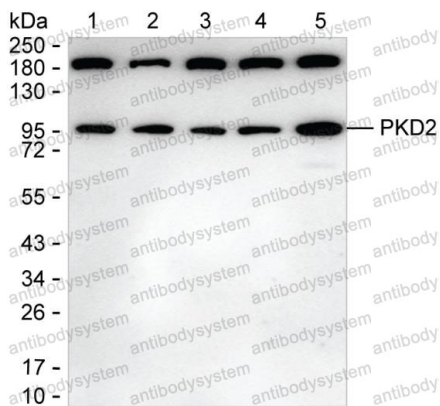
For research use only.

Data Image



Immunohistochemical

IHC-P analysis of kidney tissue by PKD2 antibody (RHG58801). IHC-P was performed using sections of the formalin-fixed paraffin-embedded kidney tissue; Result: Cells of tubules are positively stained at the cytoplasm.



Western blot

Lane 1: 15 µg of HEK-293 lysate; Lane 2: 15 µg of MCF-7 lysate; Lane 3: 15 µg of HeLa lysate; Lane 4: 15 µg of SH-SY5Y lysate; Lane 5: 15 µg of mouse kidney lysate; Result: RHG58801 can detect PKD2 by Western blotting;