

# Anti-CAMK2D Antibody (R3S76)

## Summary

---

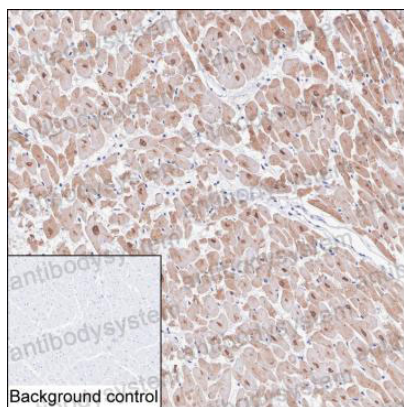
<b>Catalog No.</b>	RHG58503
<b>Clone ID</b>	R3S76
<b>Host species</b>	Mouse
<b>Tested applications</b>	IHC: 1:100-1:200, WB: 1:500-1:1000
<b>Species reactivity</b>	Human
<b>Form</b>	Liquid
<b>Storage buffer</b>	0.01M PBS, pH 7.4, 0.05% Sodium Azide.
<b>Concentration</b>	1 mg/ml
<b>Purity</b>	>95% as determined by SDS-PAGE.
<b>Clonality</b>	Monoclonal
<b>Isotype</b>	IgG1
<b>Applications</b>	IHC, WB
<b>Target</b>	CAMKD, CaM kinase II subunit delta, CaMK-II subunit delta, CAMK2D, Calcium/calmodulin-dependent protein kinase type II subunit delta
<b>Purification</b>	Protein A/G purified from cell culture supernatant.
<b>Endotoxin level</b>	Please contact with the lab for this information.
<b>Accession</b>	Q13557
<b>Stability and Storage</b>	Use a manual defrost freezer and avoid repeated freeze-thaw cycles. Store at 4°C short term (1-2 weeks). Store at -20°C 12 months. Store at -80°C long term.

**Note**

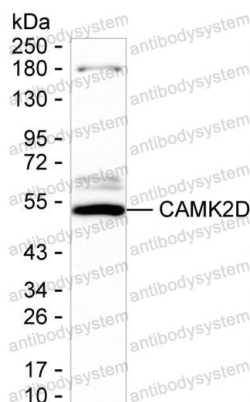
For research use only.

## Data Image

---

**Immunohistochemical**

IHC-P analysis of heart tissue by CAMK2D antibody (RHG58503). IHC-P was performed using sections of the formalin-fixed paraffin-embedded myocardium tissue; Result: Myocardial cell are positively stained at the cytoplasm and nuclei.

**Western blot**

Western blot analysis using CAMK2D mouse mAb against U-251MG lysate