

Anti-Phospho-4E-BP1 (Ser65) Antibody (R3S67)

Summary

Catalog No.	RHG57907
Clone ID	R3S67
Host species	Mouse
Tested applications	ELISA: 1:10000, FCM: 1:200-1:400, IHC: 1:200-1:1000
Species reactivity	Human
Form	Liquid
Storage buffer	0.01M PBS, pH 7.4, 0.05% Sodium Azide.
Concentration	1 mg/ml
Purity	>95% as determined by SDS-PAGE.
Clonality	Monoclonal
Isotype	IgG1
Applications	ELISA, FCM, IHC
Target	PHAS-I, eIF4E-binding protein 1, EIF4EBP1, Eukaryotic translation initiation factor 4E-binding protein 1, 4E-BP1, Phosphorylated heat- and acid-stable protein regulated by insulin 1
Purification	Protein A/G purified from cell culture supernatant.
Endotoxin level	Please contact with the lab for this information.
Accession	Q13541

Stability and Storage

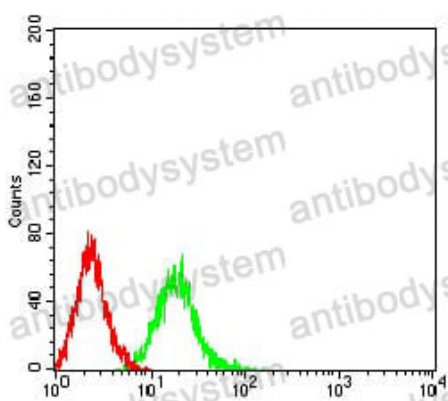
Use a manual defrost freezer and avoid repeated freeze-thaw cycles.

Store at 4°C short term (1-2 weeks). Store at -20°C 12 months. Store at -80°C long term.

Note

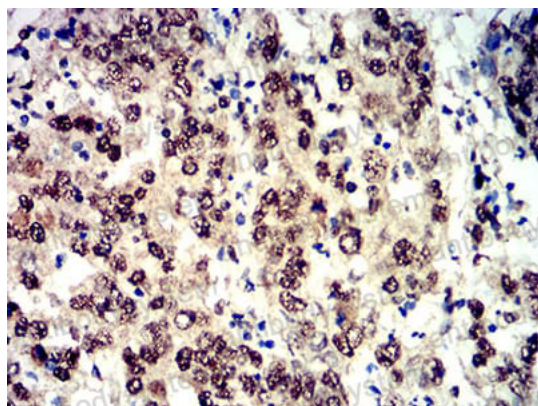
For research use only.

Data Image



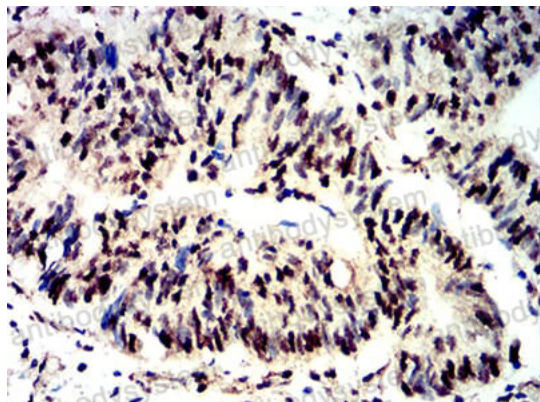
Flow Cytometry

Flow cytometric analysis of Jurkat cells using Phospho-4E-BP1 (Ser65) mouse mAb (green) and negative control (red).



Immunohistochemical

Immunohistochemical analysis of paraffin-embedded human stomach cancer tissues using Phospho-4E-BP1 (Ser65) mouse mAb with DAB staining.



Immunohistochemical

Immunohistochemical analysis of paraffin-embedded human rectum cancer tissues using Phospho-4E-BP1 (Ser65) mouse mAb with DAB staining.