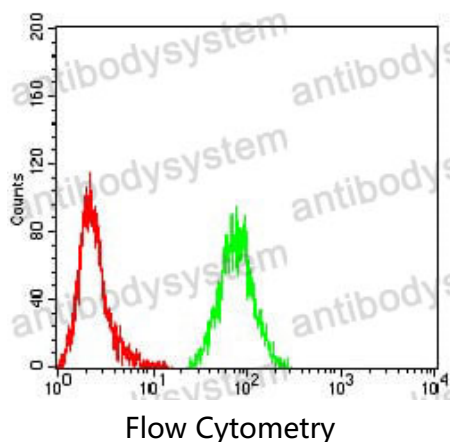


Anti-TUBB3/Beta Tubulin Antibody (R3S60)

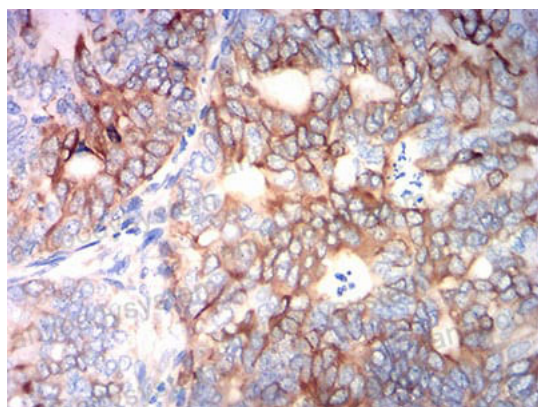
Summary

Catalog No.	RHG56705
Clone ID	R3S60
Host species	Mouse
Tested applications	ELISA: 1:10000, FCM: 1:200-1:400, IHC: 1:200-1:1000, WB: 1:500-1:2000
Species reactivity	Human, Mouse
Form	Liquid
Storage buffer	0.01M PBS, pH 7.4, 0.05% Sodium Azide.
Concentration	1 mg/ml
Purity	>95% as determined by SDS-PAGE.
Clonality	Monoclonal
Isotype	IgG1
Applications	ELISA, FCM, IHC, WB
Target	Tubulin beta-III, TUBB4, TUBB3, Tubulin beta-4 chain, Tubulin beta-3 chain
Purification	Protein A/G purified from cell culture supernatant.
Endotoxin level	Please contact with the lab for this information.
Accession	Q13509
Stability and Storage	Use a manual defrost freezer and avoid repeated freeze-thaw cycles. Store at 4°C short term (1-2 weeks). Store at -20°C 12 months. Store at -80°C long term.
Note	For research use only.

Data Image

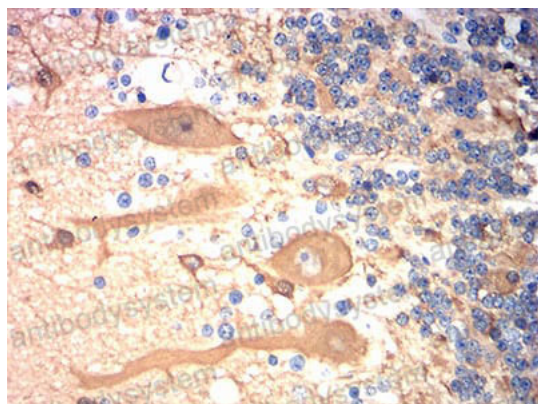


Flow cytometric analysis of Hela cells using TUBB3 mouse mAb (green) and negative control (red).



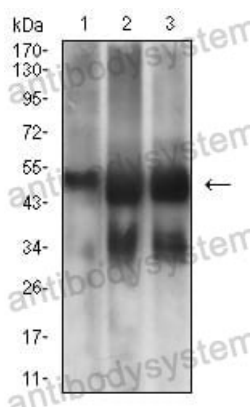
Immunohistochemical

Immunohistochemical analysis of paraffin-embedded human cervical cancer tissues using TUBB3 mouse mAb with DAB staining.



Immunohistochemical

Immunohistochemical analysis of paraffin-embedded human cerebellum tissues using TUBB3 mouse mAb with DAB staining.



Western blot

Western blot analysis using TUBB3 mouse mAb against NIH/3T3 (1), HeLa (2), and A549 (3) cell lysate.