

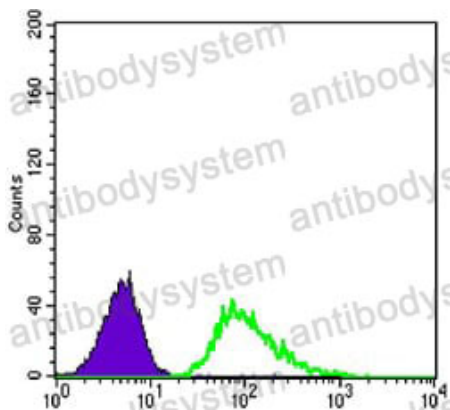
# Anti-TUBB3/Beta Tubulin Antibody (R3S59)

## Summary

---

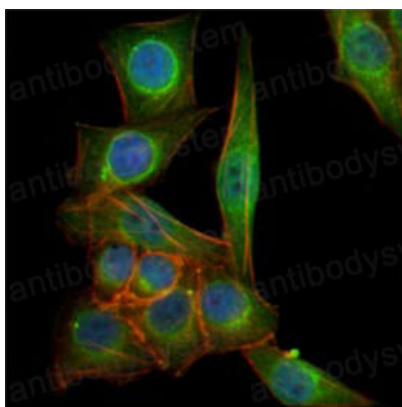
<b>Catalog No.</b>	RHG56704
<b>Clone ID</b>	R3S59
<b>Host species</b>	Mouse
<b>Tested applications</b>	FCM: 1:200-1:400, IF: 1:200-1:1000, WB: 1:500-1:2000
<b>Species reactivity</b>	Human, Mouse, Rat
<b>Form</b>	Liquid
<b>Storage buffer</b>	0.01M PBS, pH 7.4, 0.05% Sodium Azide.
<b>Concentration</b>	1 mg/ml
<b>Purity</b>	>95% as determined by SDS-PAGE.
<b>Clonality</b>	Monoclonal
<b>Isotype</b>	IgG1
<b>Applications</b>	FCM, IF, WB
<b>Target</b>	Tubulin beta-III, TUBB4, TUBB3, Tubulin beta-4 chain, Tubulin beta-3 chain
<b>Purification</b>	Protein A/G purified from cell culture supernatant.
<b>Endotoxin level</b>	Please contact with the lab for this information.
<b>Accession</b>	Q13509
<b>Stability and Storage</b>	Use a manual defrost freezer and avoid repeated freeze-thaw cycles. Store at 4°C short term (1-2 weeks). Store at -20°C 12 months. Store at -80°C long term.
<b>Note</b>	For research use only.

## Data Image



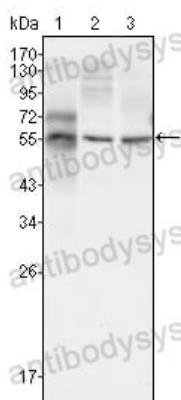
Flow Cytometry

Flow cytometric analysis of A549 cells using TUBB3 mouse mAb (green) and negative control (purple).



Immunofluorescence

Immunofluorescence analysis of PANC-1 cells using TUBB3 mouse mAb (green). Blue: DRAQ5 fluorescent DNA dye. Red: Actin filaments have been labeled with Alexa Fluor-555 phalloidin.



Western blot

Western blot analysis using TUBB3 mouse mAb against HepG2 (1), A549 (2) and Hela (3) cell lysate.