

Anti-SQSTM1 Antibody (R3S58)

Summary

Catalog No.	RHG56101
Clone ID	R3S58
Host species	Mouse
Tested applications	ELISA: 1:10000, FCM: 1:200-1:400, IF: 1:100-1:200, IHC: 1:200-1:1000, WB: 1:500-1:2000
Species reactivity	Human, Mouse, Rat, Rabbit, Monkey
Form	Liquid
Storage buffer	0.01M PBS, pH 7.4, 0.05% Sodium Azide.
Concentration	1 mg/ml
Purity	>95% as determined by SDS-PAGE.
Clonality	Monoclonal
Isotype	IgG1
Applications	ELISA, FCM, IF, IHC, WB
Target	OSIL, EBIAP, Sequestosome-1, Ubiquitin-binding protein p62, ORCA, EBI3-associated protein of 60 kDa, p60, SQSTM1, Phosphotyrosine-independent ligand for the Lck SH2 domain of 62 kDa
Purification	Protein A/G purified from cell culture supernatant.
Endotoxin level	Please contact with the lab for this information.
Accession	Q13501

Stability and Storage

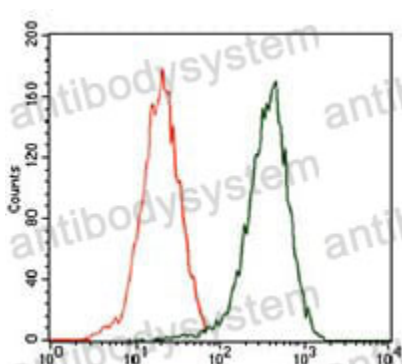
Use a manual defrost freezer and avoid repeated freeze-thaw cycles.

Store at 4°C short term (1-2 weeks). Store at -20°C 12 months. Store at -80°C long term.

Note

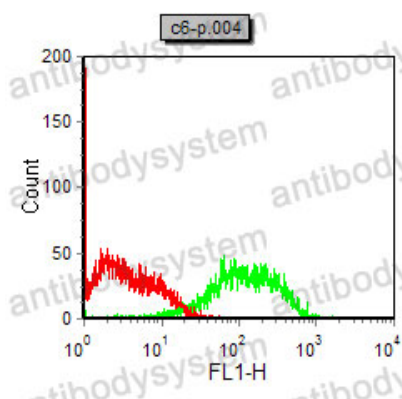
For research use only.

Data Image



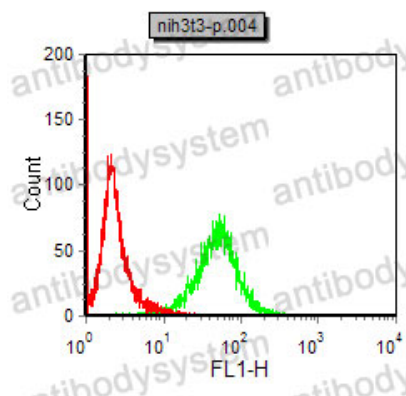
Flow Cytometry

Flow cytometric analysis of HEK293 cells using SQSTM1 mouse mAb (green) and negative control (red).



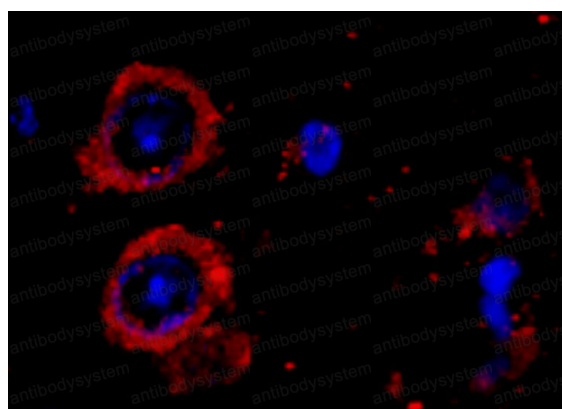
Flow Cytometry

Flow cytometric analysis of C6 cells using SQSTM1 mouse mAb (green) and negative control (red).



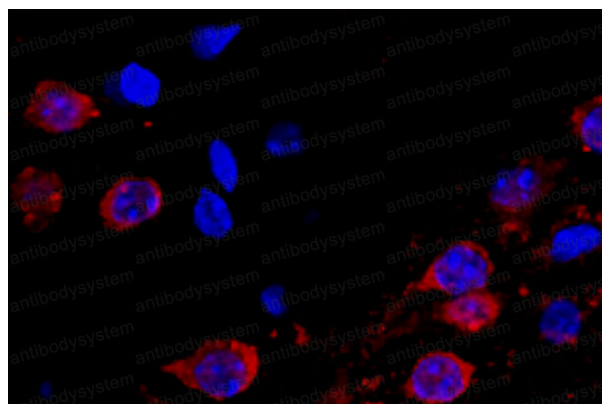
Flow Cytometry

Flow cytometric analysis of NIH/3T3 cells using SQSTM1 mouse mAb (green) and negative control (red).



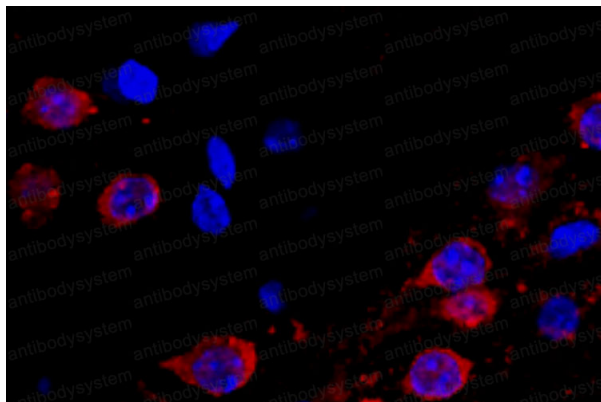
Immunofluorescence

Immunofluorescence analysis of Rat cortical tissue using SQSTM1 mouse mAb (Red). Blue: DRAQ5 fluorescent DNA dye.



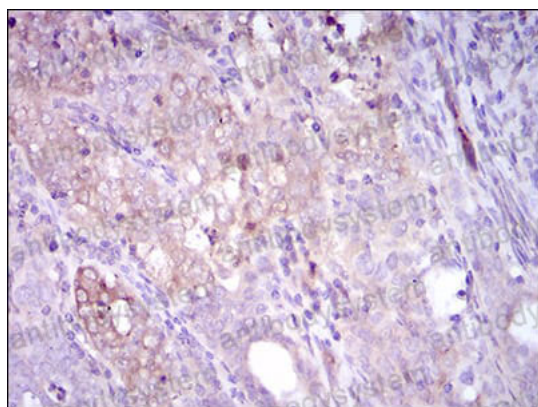
Immunofluorescence

Immunofluorescence analysis of Mouse cortical tissue using SQSTM1 mouse mAb (Red). Blue: DRAQ5 fluorescent DNA dye.



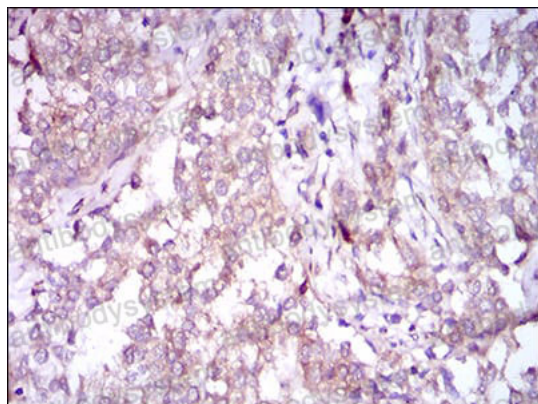
Immunofluorescence

Immunofluorescence analysis of Mouse cortical tissue using SQSTM1 mouse mAb (Red). Blue: DRAQ5 fluorescent DNA dye.



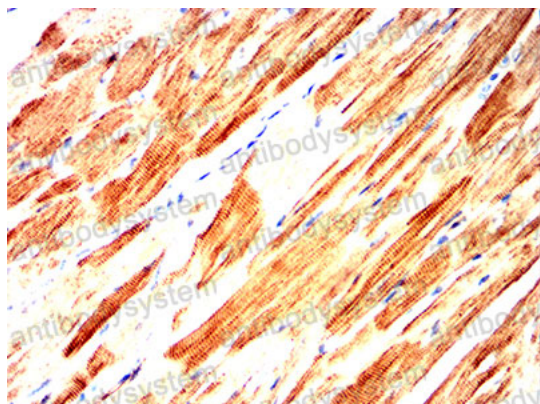
Immunohistochemical

Immunohistochemical analysis of paraffin-embedded human cervical cancer tissues using SQSTM1 mouse mAb with DAB staining.



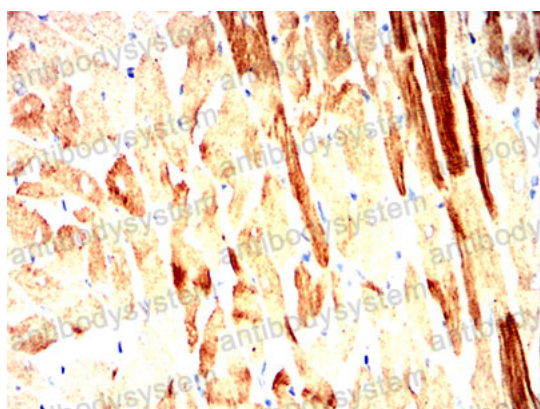
Immunohistochemical

Immunohistochemical analysis of paraffin-embedded human bladder cancer tissues using SQSTM1 mouse mAb with DAB staining.



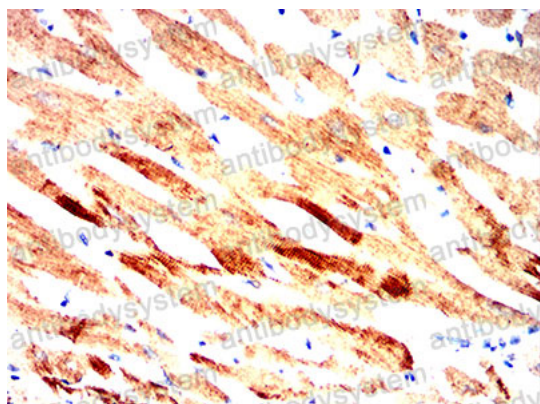
Immunohistochemical

Immunohistochemical analysis of paraffin-embedded Mouse Heart using SQSTM1 mouse mAb with DAB staining.



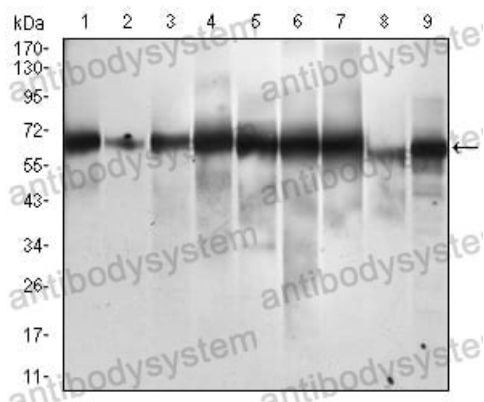
Immunohistochemical

Immunohistochemical analysis of paraffin-embedded Rat Heart using SQSTM1 mouse mAb with DAB staining.



Immunohistochemical

Immunohistochemical analysis of paraffin-embedded Rabbit Heart using SQSTM1 mouse mAb with DAB staining.



Western blot

Western blot analysis using SQSTM1 mouse mAb against Hela (1), Jurkat (2), THP-1 (3), HEK293 (4), A549 (5), MCF-7 (6), HepG2 (7), COS7 (8) and SK-BR-3 (9) cell lysate.