

Anti-SMAD4 Antibody (R3S56)

Summary

Catalog No.	RHG55202
Clone ID	R3S56
Host species	Mouse
Tested applications	FCM: 1:200-1:400, IF: 1:200-1:1000, IHC: 1:200-1:1000, WB: 1:500-1:2000
Species reactivity	Human, Mouse
Form	Liquid
Storage buffer	0.01M PBS, pH 7.4, 0.05% Sodium Azide.
Concentration	1 mg/ml
Purity	>95% as determined by SDS-PAGE.
Clonality	Monoclonal
Isotype	IgG1
Applications	FCM, IF, IHC, WB
Target	Smad4, Mothers against decapentaplegic homolog 4, Deletion target in pancreatic carcinoma 4, DPC4, MAD homolog 4, SMAD 4, Mothers against DPP homolog 4, MADH4, SMAD4, hSMAD4, SMAD family member 4
Purification	Protein A/G purified from cell culture supernatant.
Endotoxin level	Please contact with the lab for this information.
Accession	Q13485

Stability and Storage

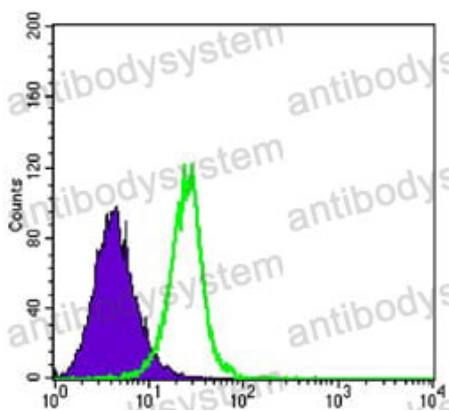
Use a manual defrost freezer and avoid repeated freeze-thaw cycles.

Store at 4°C short term (1-2 weeks). Store at -20°C 12 months. Store at -80°C long term.

Note

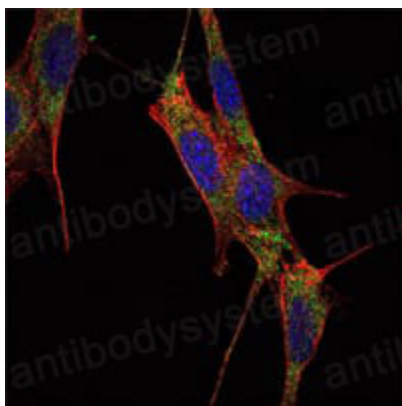
For research use only.

Data Image



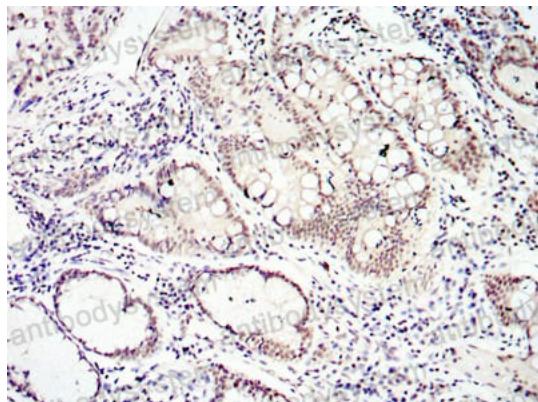
Flow Cytometry

Flow cytometric analysis of K562 cells using SMAD4 mouse mAb (green) and negative control (purple).



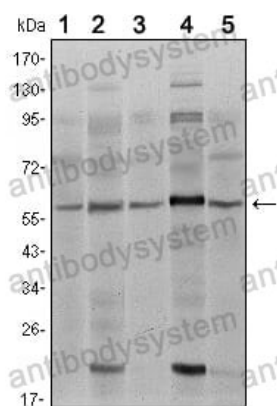
Immunofluorescence

Immunofluorescence analysis of NIH/3T3 cells using SMAD4 mouse mAb (green). Blue: DRAQ5 fluorescent DNA dye. Red: Actin filaments have been labeled with Alexa Fluor-555 phalloidin.



Immunohistochemical

Immunohistochemical analysis of paraffin-embedded human lung cancer tissues using SMAD4 mouse mAb with DAB staining.



Western blot

Western blot analysis using SMAD4 mouse mAb against A431 (1), SK-N-SH (2), K562 (3), HepG2 (4) and HUVE12 (5) cell lysate.