

# Anti-MSLN/Mesothelin Antibody (R3S42)

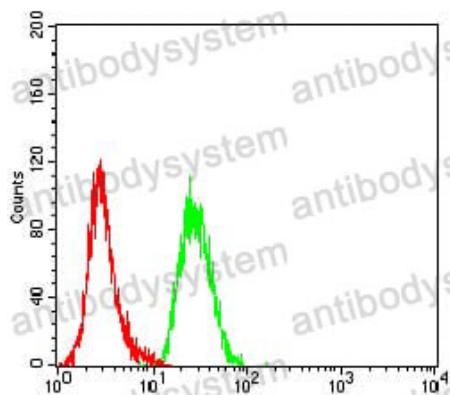
## Summary

---

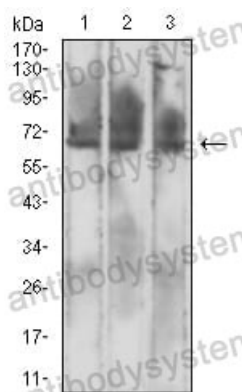
<b>Catalog No.</b>	RHG52003
<b>Clone ID</b>	R3S42
<b>Host species</b>	Mouse
<b>Tested applications</b>	ELISA: 1:10000, FCM: 1:200-1:400, WB: 1:500-1:2000
<b>Species reactivity</b>	Human, Monkey
<b>Form</b>	Liquid
<b>Storage buffer</b>	0.01M PBS, pH 7.4, 0.05% Sodium Azide.
<b>Concentration</b>	1 mg/ml
<b>Purity</b>	>95% as determined by SDS-PAGE.
<b>Clonality</b>	Monoclonal
<b>Isotype</b>	IgG2b
<b>Applications</b>	ELISA, FCM, WB
<b>Target</b>	CAK1 antigen, Mesothelin, MSLN, Pre-pro-megakaryocyte-potentiating factor, MPF
<b>Purification</b>	Protein A/G purified from cell culture supernatant.
<b>Endotoxin level</b>	Please contact with the lab for this information.
<b>Accession</b>	Q13421
<b>Stability and Storage</b>	Use a manual defrost freezer and avoid repeated freeze-thaw cycles. Store at 4°C short term (1-2 weeks). Store at -20°C 12 months. Store at -80°C long term.

**Note**

For research use only.

**Data Image****Flow Cytometry**

Flow cytometric analysis of HeLa cells using MSLN mouse mAb (green) and negative control (red).

**Western blot**

Western blot analysis using MSLN mouse mAb against CHO3D10 (1), SK-MES-1 (2), and HL-60 (3) cell lysate.