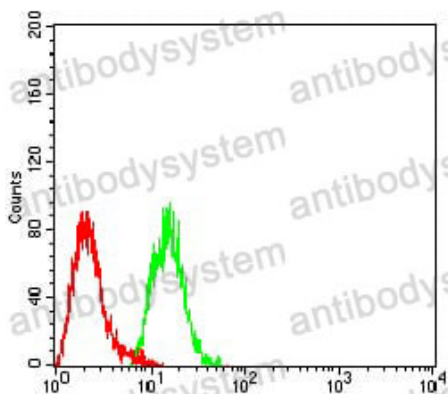


Anti-MTA1 Antibody (R3S36)

Summary

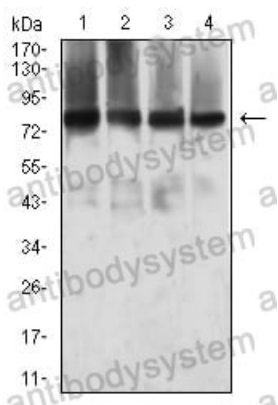
Catalog No.	RHG48901
Clone ID	R3S36
Host species	Mouse
Tested applications	ELISA: 1:10000, FCM: 1:200-1:400, WB: 1:500-1:2000
Species reactivity	Human
Form	Liquid
Storage buffer	0.01M PBS, pH 7.4, 0.05% Sodium Azide.
Concentration	1 mg/ml
Purity	>95% as determined by SDS-PAGE.
Clonality	Monoclonal
Isotype	IgG2b
Applications	ELISA, FCM, WB
Target	Metastasis-associated protein MTA1, MTA1
Purification	Protein A/G purified from cell culture supernatant.
Endotoxin level	Please contact with the lab for this information.
Accession	Q13330
Stability and Storage	Use a manual defrost freezer and avoid repeated freeze-thaw cycles. Store at 4°C short term (1-2 weeks). Store at -20°C 12 months. Store at -80°C long term.
Note	For research use only.

Data Image



Flow Cytometry

Flow cytometric analysis of Hela cells using MTA1 mouse mAb (green) and negative control (red).



Western blot

Western blot analysis using MTA1 mouse mAb against SW480 (1), T47D (2), MCF-7 (3), and COS7 (4) cell lysate.