

Anti-CD150/SLAMF1 Antibody (R3S28)

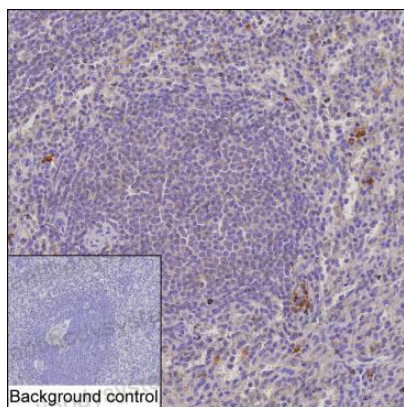
Summary

Catalog No.	RHG47403
Clone ID	R3S28
Host species	Mouse
Tested applications	IHC: 1:50-1:200
Species reactivity	Human
Form	Liquid
Storage buffer	0.01M PBS, pH 7.4, 0.05% Sodium Azide.
Concentration	1 mg/ml
Purity	>95% as determined by SDS-PAGE.
Clonality	Monoclonal
Isotype	IgG2a
Applications	IHC
Target	SLAM family member 1, IPO-3, CDw150, SLAMF1, SLAM, CD150, Signaling lymphocytic activation molecule
Purification	Protein A/G purified from cell culture supernatant.
Endotoxin level	Please contact with the lab for this information.
Accession	Q13291
Stability and Storage	Use a manual defrost freezer and avoid repeated freeze-thaw cycles. Store at 4°C short term (1-2 weeks). Store at -20°C 12 months. Store at -80°C long term.

Note

For research use only.

Data Image



Immunohistochemical

IHC-P analysis of spleen tissue by SLAMF1 antibody (RHG47403). IHC-P was performed using sections of the formalin-fixed paraffin-embedded spleen tissue; Result: A few cells in red pulp are positively stained at the cytoplasm.