

Anti-CBX3 Antibody (R3S23)

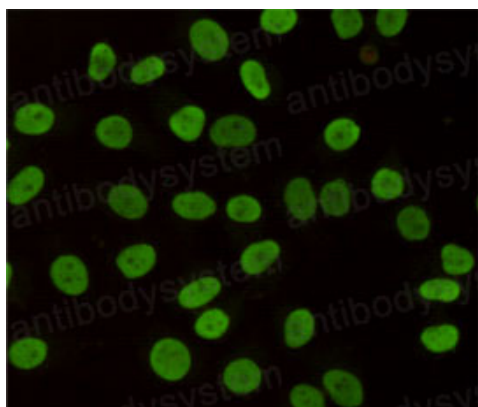
Summary

Catalog No.	RHG43409
Clone ID	R3S23
Host species	Mouse
Tested applications	IF: 1:50-1:200, IHC: 1:50-1:100, IP: 1:20, WB: 1:500-1:1000
Species reactivity	Human, Mouse, Rat, Hamster, Monkey
Form	Liquid
Storage buffer	0.01M PBS, pH 7.4, 0.5% BSA, 0.05% Sodium Azide and 50% Glycerol.
Concentration	1 mg/ml
Purity	>95% as determined by SDS-PAGE.
Clonality	Monoclonal
Isotype	IgG1
Applications	IF, IHC, IP, WB
Target	HECH, Heterochromatin protein 1 homolog gamma, Modifier 2 protein, Chromobox protein homolog 3, HP1 gamma, CBX3
Purification	Protein A/G purified from cell culture supernatant.
Endotoxin level	Please contact with the lab for this information.
Accession	Q13185
Stability and Storage	Use a manual defrost freezer and avoid repeated freeze-thaw cycles. Store at 4°C short term (1-2 weeks). Store at -20°C 12 months. Store at -80°C long term.

Note

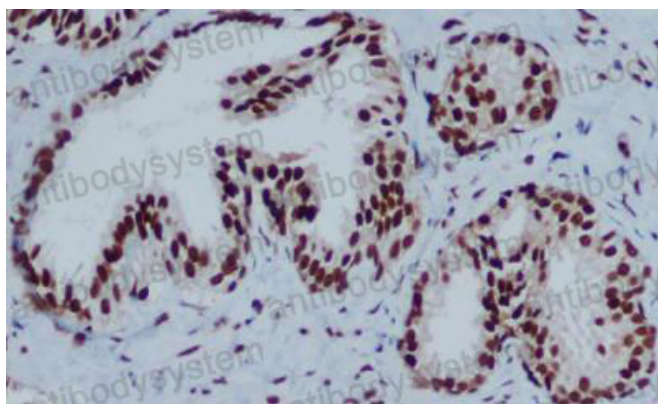
For research use only.

Data Image



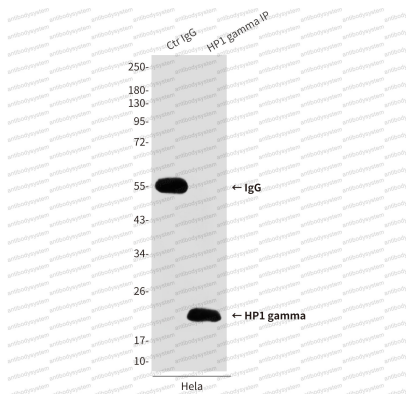
Immunofluorescence

Immunocytochemistry analysis of HP1 gamma in HeLa using HP1 gamma antibody.



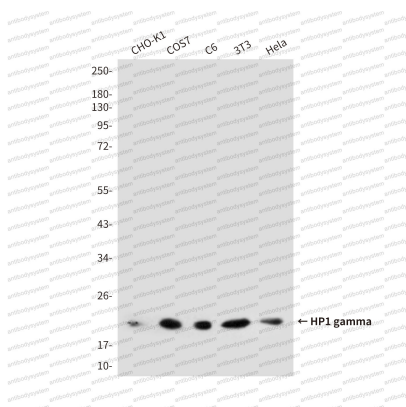
Immunohistochemical

Immunohistochemistry analysis of paraffin-embedded Prostate Cancer using HP1 gamma antibody. High-pressure and temperature Sodium Citrate pH 6.0 was used for antigen retrieval.



Immunoprecipitation

Immunoprecipitation analysis of HP1 gamma in HeLa lysates using HP1 gamma antibody.



Western blot

Western blot analysis of HP1 gamma in HeLa, 3T3, C6, COS7 and CHO-K1 lysates using HP1 gamma antibody.