

Anti-CBX3 Antibody (R3S21)

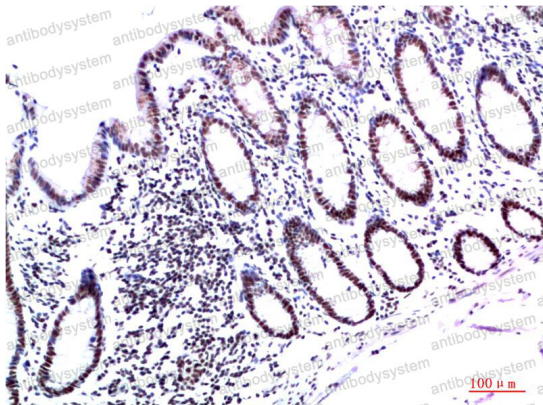
Summary

Catalog No.	RHG43407
Clone ID	R3S21
Host species	Mouse
Tested applications	IHC: 1:50-1:100, WB: 1:500-1:1000
Species reactivity	Human, Mouse, Rat
Form	Liquid
Storage buffer	0.01M PBS, pH 7.4, 0.5% BSA, 0.05% Sodium Azide and 50% Glycerol.
Concentration	1 mg/ml
Purity	>95% as determined by SDS-PAGE.
Clonality	Monoclonal
Isotype	IgG1
Applications	IHC, WB
Target	HECH, Heterochromatin protein 1 homolog gamma, Modifier 2 protein, Chromobox protein homolog 3, HP1 gamma, CBX3
Purification	Protein A/G purified from cell culture supernatant.
Endotoxin level	Please contact with the lab for this information.
Accession	Q13185
Stability and Storage	Use a manual defrost freezer and avoid repeated freeze-thaw cycles. Store at 4°C short term (1-2 weeks). Store at -20°C 12 months. Store at -80°C long term.

Note

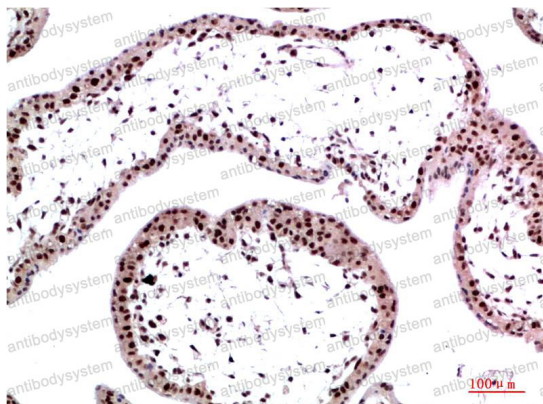
For research use only.

Data Image



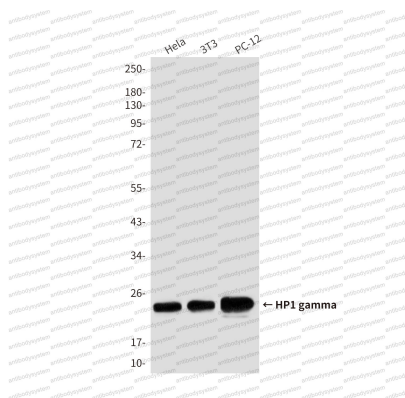
Immunohistochemical

Immunohistochemistry analysis of paraffin-embedded Human Colon Carcinoma Tissue using HP1 gamma antibody. High-pressure and temperature Sodium Citrate pH 6.0 was used for antigen retrieval.



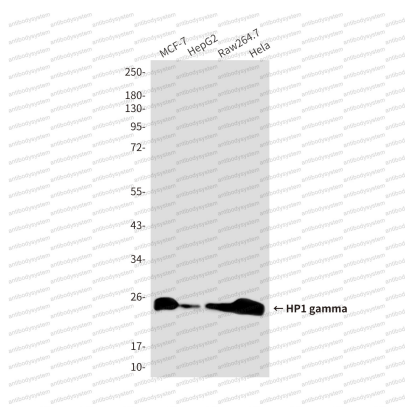
Immunohistochemical

Immunohistochemical analysis of paraffin-embedded Human tonsils using HP1 gamma antibody. High-pressure and temperature Sodium Citrate pH 6.0 was used for antigen retrieval.



Western blot

Western blot analysis of HP1 gamma in HeLa lysates , 3T3 lysates , PC-12 lysates using HP1 gamma antibody



Western blot

Western blot analysis of HP1 gamma in MCF-7, HepG2, Raw264.7, HeLa lysates using HP1 gamma antibody.