

Anti-LpPLA2/PLA2G7/PAF-AH Antibody (R3S06)

Summary

Catalog No.	RHG39702
Clone ID	R3S06
Host species	Mouse
Tested applications	ELISA: 1:10000, IF: 1:200-1:1000, IHC: 1:200-1:1000
Species reactivity	Human
Form	Liquid
Storage buffer	0.01M PBS, pH 7.4, 0.05% Sodium Azide.
Concentration	1 mg/ml
Purity	>95% as determined by SDS-PAGE.
Clonality	Monoclonal
Isotype	IgG1
Applications	ELISA, IF, IHC
Target	Platelet-activating factor acetylhydrolase, PAFAH, PAF 2-acylhydrolase, PAF acetylhydrolase, 2-acetyl-1-alkylglycerophosphocholine esterase, 1-alkyl-2-acetyl-1-alkylglycerophosphocholine esterase, LDL-PLA(2), LDL-associated phospholipase A2, PLA2G7, Group-VIIA phospholipase A2, gVIIA-PLA2
Purification	Protein A/G purified from cell culture supernatant.
Endotoxin level	Please contact with the lab for this information.
Accession	Q13093

Stability and Storage

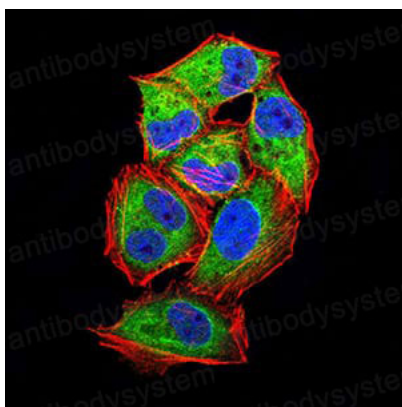
Use a manual defrost freezer and avoid repeated freeze-thaw cycles.

Store at 4°C short term (1-2 weeks). Store at -20°C 12 months. Store at -80°C long term.

Note

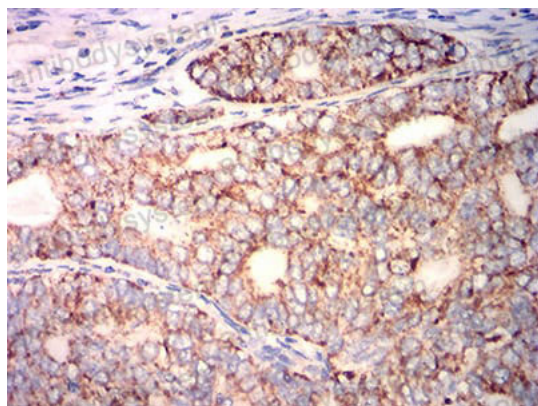
For research use only.

Data Image



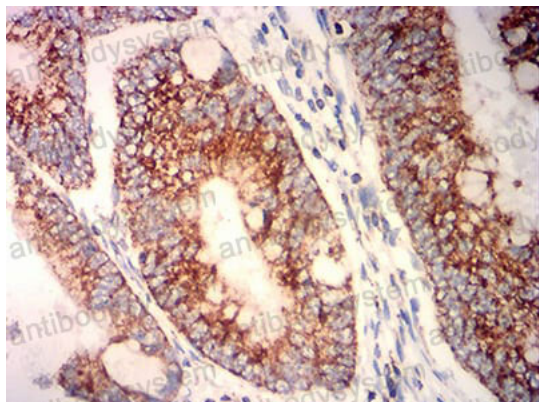
Immunofluorescence

Immunofluorescence analysis of HeLa cells using PLA2G7 mouse mAb (green). Blue: DRAQ5 fluorescent DNA dye. Red: Actin filaments have been labeled with Alexa Fluor- 555 phalloidin.



Immunohistochemical

Immunohistochemical analysis of paraffin-embedded human cervical cancer tissues using PLA2G7 mouse mAb with DAB staining.



Immunohistochemical

Immunohistochemical analysis of paraffin-embedded human rectum cancer tissues using PLA2G7 mouse mAb with DAB staining.