

Anti-TRAF2 Antibody (R3R97)

Summary

Catalog No.	RHG34302
Clone ID	R3R97
Host species	Mouse
Tested applications	ELISA: 1:10000, FCM: 1:200-1:400, IF: 1:200-1:1000, IHC: 1:200-1:1000
Species reactivity	Human
Form	Liquid
Storage buffer	0.01M PBS, pH 7.4, 0.05% Sodium Azide.
Concentration	1 mg/ml
Purity	>95% as determined by SDS-PAGE.
Clonality	Monoclonal
Isotype	IgG1
Applications	ELISA, FCM, IF, IHC
Target	TRAF3, RING-type E3 ubiquitin transferase TRAF2, E3 ubiquitin-protein ligase TRAF2, Tumor necrosis factor type 2 receptor-associated protein 3, TRAF2, TNF receptor-associated factor 2
Purification	Protein A/G purified from cell culture supernatant.
Endotoxin level	Please contact with the lab for this information.
Accession	Q12933

Stability and Storage

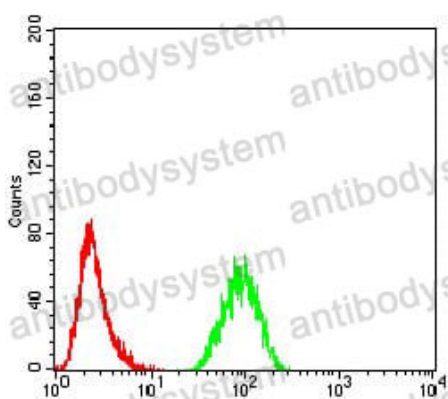
Use a manual defrost freezer and avoid repeated freeze-thaw cycles.

Store at 4°C short term (1-2 weeks). Store at -20°C 12 months. Store at -80°C long term.

Note

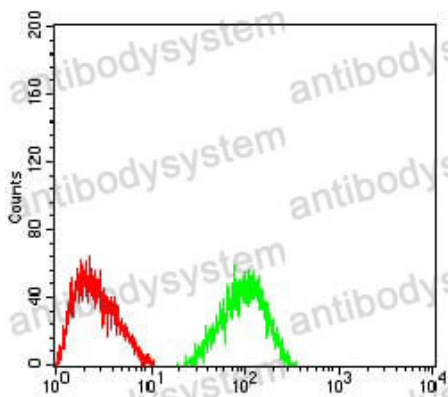
For research use only.

Data Image



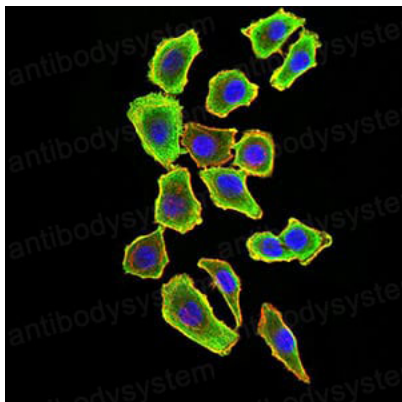
Flow Cytometry

Flow cytometric analysis of HeLa cells using TRA2 mouse mAb (green) and negative control (red).



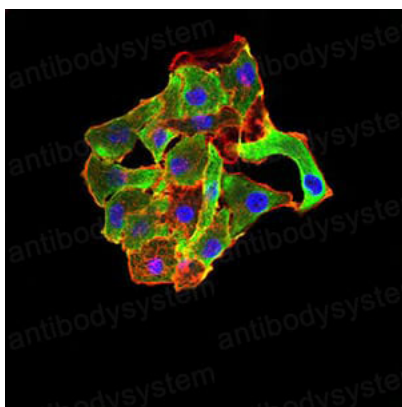
Flow Cytometry

Flow cytometric analysis of HepG2 cells using TRA2 mouse mAb (green) and negative control (red).



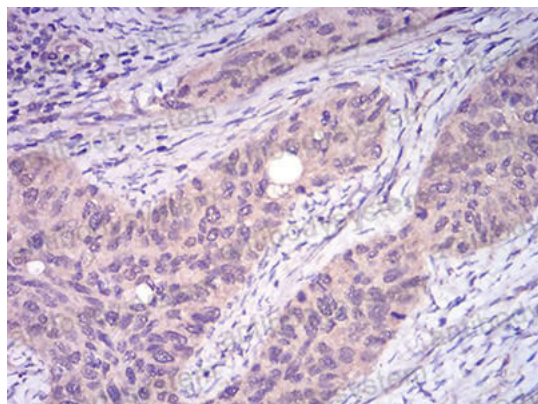
Immunofluorescence

Immunofluorescence analysis of HL-7702 cells using TRAF2 mouse mAb (green). Blue: DRAQ5 fluorescent DNA dye. Red: Actin filaments have been labeled with Alexa Fluor- 555 phalloidin.



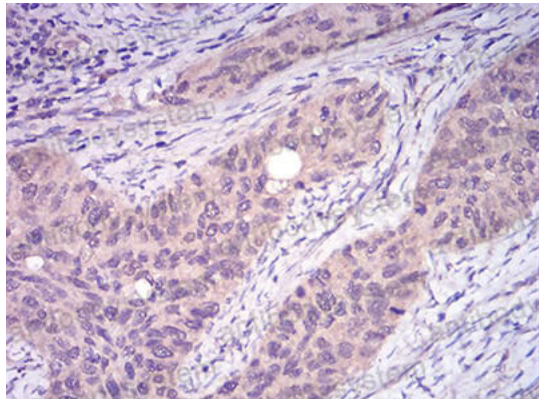
Immunofluorescence

Immunofluorescence analysis of MCF-7 cells using TRAF2 mouse mAb (green). Blue: DRAQ5 fluorescent DNA dye. Red: Actin filaments have been labeled with Alexa Fluor- 555 phalloidin.



Immunohistochemical

Immunohistochemical analysis of paraffin-embedded human cervical cancer tissues using TRAF2 mouse mAb with DAB staining.



Immunohistochemical

Immunohistochemical analysis of paraffin-embedded human cervical cancer tissues using TRAF2 mouse mAb with DAB staining.