

Anti-CD161/KLRB1 Antibody (R3R96)

Summary

Catalog No.	RHG33801
Clone ID	R3R96
Host species	Mouse
Tested applications	ELISA: 1:10000, FCM: 1:200-1:400
Species reactivity	Human
Form	Liquid
Storage buffer	0.01M PBS, pH 7.4, 0.05% Sodium Azide.
Concentration	1 mg/ml
Purity	>95% as determined by SDS-PAGE.
Clonality	Monoclonal
Isotype	IgG2b
Applications	ELISA, FCM
Target	CLEC5B, KLRB1, CD161, HNKRP-1a, C-type lectin domain family 5 member B, NKRP1A, Natural killer cell surface protein P1A, Killer cell lectin-like receptor subfamily B member 1, NKR-P1A
Purification	Protein A/G purified from cell culture supernatant.
Endotoxin level	Please contact with the lab for this information.
Accession	Q12918

Stability and Storage

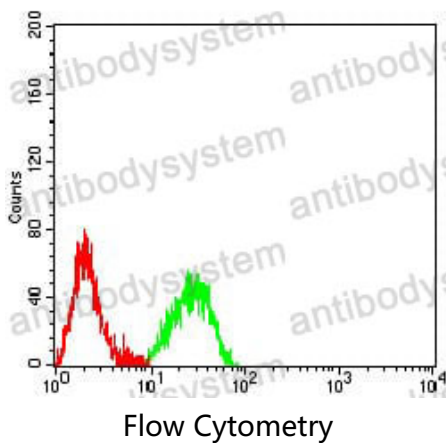
Use a manual defrost freezer and avoid repeated freeze-thaw cycles.

Store at 4°C short term (1-2 weeks). Store at -20°C 12 months. Store at -80°C long term.

Note

For research use only.

Data Image



Flow cytometric analysis of Raji cells using CD161 mouse mAb (green) and negative control (red).