

Anti-FAP/FAPalpha Antibody (R3R90)

Summary

Catalog No.	RHG32202
Clone ID	R3R90
Host species	Mouse
Tested applications	ELISA: 1:10000, FCM: 1:200-1:400, IHC: 1:200-1:1000
Species reactivity	Human
Form	Liquid
Storage buffer	0.01M PBS, pH 7.4, 0.05% Sodium Azide.
Concentration	1 mg/ml
Purity	>95% as determined by SDS-PAGE.
Clonality	Monoclonal
Isotype	IgG1
Applications	ELISA, FCM, IHC
Target	Surface-expressed protease, Gelatine degradation protease FAP, Integral membrane serine protease, Dipeptidyl peptidase FAP, Seprase, FAP, Post-proline cleaving enzyme, APCE, SIMP, FAPalpha, 170 kDa melanoma membrane-bound gelatinase, Fibroblast activation protein alpha, Serine integral membrane protease, Prolyl endopeptidase FAP
Purification	Protein A/G purified from cell culture supernatant.
Endotoxin level	Please contact with the lab for this information.
Accession	Q12884

Stability and Storage

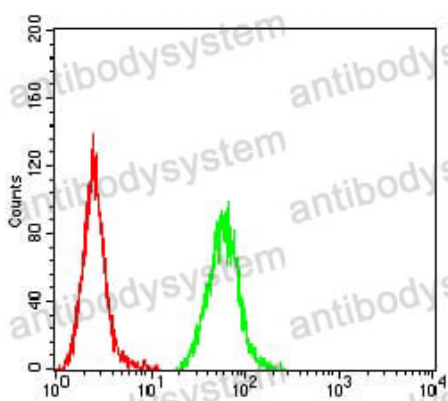
Use a manual defrost freezer and avoid repeated freeze-thaw cycles.

Store at 4°C short term (1-2 weeks). Store at -20°C 12 months. Store at -80°C long term.

Note

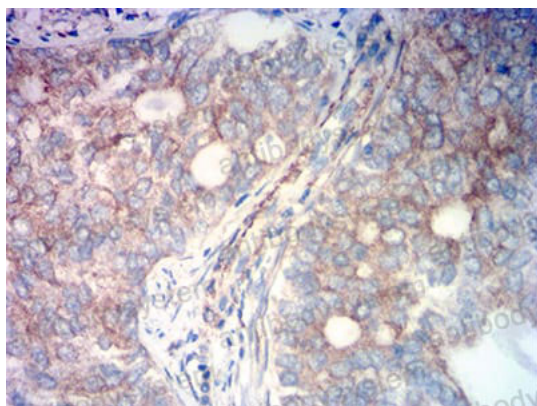
For research use only.

Data Image



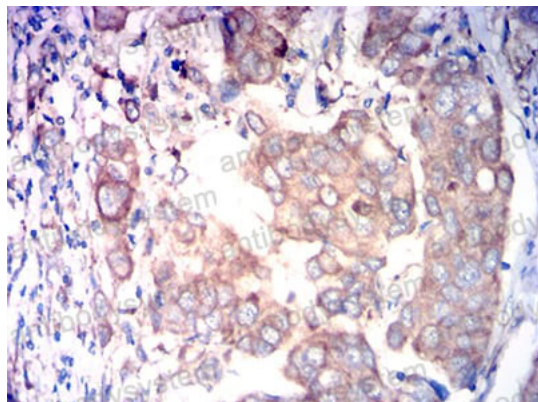
Flow Cytometry

Flow cytometric analysis of Hela cells using FAP mouse mAb (green) and negative control (red).



Immunohistochemical

Immunohistochemical analysis of paraffin-embedded human cervical cancer tissues using FAP mouse mAb with DAB staining.



Immunohistochemical

Immunohistochemical analysis of paraffin-embedded human breast cancer tissues using FAP mouse mAb with DAB staining.