

Anti-CHD3 Antibody (R3R88)

Summary

| | |
|----------------------------|--|
| Catalog No. | RHG31803 |
| Clone ID | R3R88 |
| Host species | Mouse |
| Tested applications | IF: 1:50-1:200, IP: 1:20, WB: 1:500-1:1000 |
| Species reactivity | Human, Mouse, Rat |
| Form | Liquid |
| Storage buffer | 0.01M PBS, pH 7.4, 0.5% BSA, 0.05% Sodium Azide and 50% Glycerol. |
| Concentration | 1 mg/ml |
| Purity | >95% as determined by SDS-PAGE. |
| Clonality | Monoclonal |
| Isotype | IgG1 |
| Applications | IF, IP, WB |
| Target | CHD-3, Mi2-alpha, ATP-dependent helicase CHD3, Mi-2 autoantigen 240 kDa protein, Chromodomain-helicase-DNA-binding protein 3, CHD3, hZFH, Zinc finger helicase |
| Purification | Protein A/G purified from cell culture supernatant. |
| Endotoxin level | Please contact with the lab for this information. |
| Accession | Q12873 |

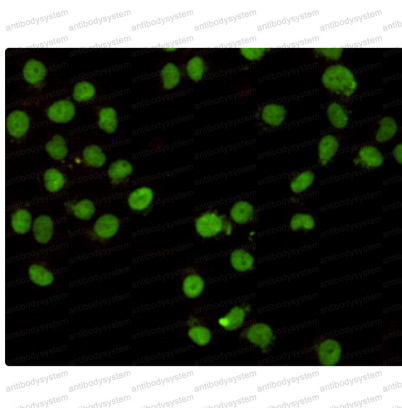
Recombinant Proteins & Antibodies

Stability and Storage

Use a manual defrost freezer and avoid repeated freeze-thaw cycles.
Store at 4°C short term (1-2 weeks). Store at -20°C 12 months. Store at -80°C long term.

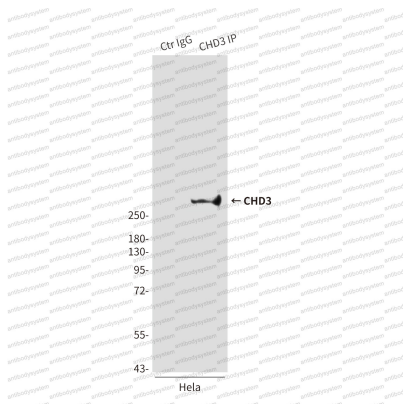
Note

For research use only.

Data Image

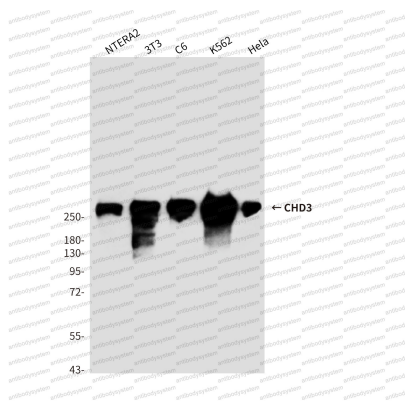
Immunofluorescence

Immunocytochemistry analysis of CHD3 in HeLa using CHD3 (Cterminus) antibody.



Immunoprecipitation

Immunoprecipitation analysis of CHD3 in HeLa lysates using CHD3 antibody.



Western blot

Western blot analysis of CHD3 (Cterminus) in NTERA-2, 3T3, C6, K562 and HeLa lysates using CHD3 (Cterminus) antibody.