

# Anti-CHD3 Antibody (R3R87)

## Summary

---

<b>Catalog No.</b>	RHG31802
<b>Clone ID</b>	R3R87
<b>Host species</b>	Mouse
<b>Tested applications</b>	FCM: 1:200-1:400, IF: 1:200-1:1000, IHC: 1:200-1:1000, WB: 1:500-1:2000
<b>Species reactivity</b>	Human, Mouse
<b>Form</b>	Liquid
<b>Storage buffer</b>	0.01M PBS, pH 7.4, 0.05% Sodium Azide.
<b>Concentration</b>	1 mg/ml
<b>Purity</b>	>95% as determined by SDS-PAGE.
<b>Clonality</b>	Monoclonal
<b>Isotype</b>	IgG1
<b>Applications</b>	FCM, IF, IHC, WB
<b>Target</b>	CHD-3, Mi2-alpha, ATP-dependent helicase CHD3, Mi-2 autoantigen 240 kDa protein, Chromodomain-helicase-DNA-binding protein 3, CHD3, hZFH, Zinc finger helicase
<b>Purification</b>	Protein A/G purified from cell culture supernatant.
<b>Endotoxin level</b>	Please contact with the lab for this information.
<b>Accession</b>	Q12873

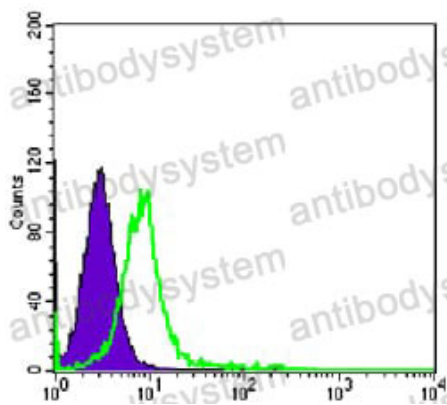
**Stability and Storage**

Use a manual defrost freezer and avoid repeated freeze-thaw cycles.

Store at 4°C short term (1-2 weeks). Store at -20°C 12 months. Store at -80°C long term.

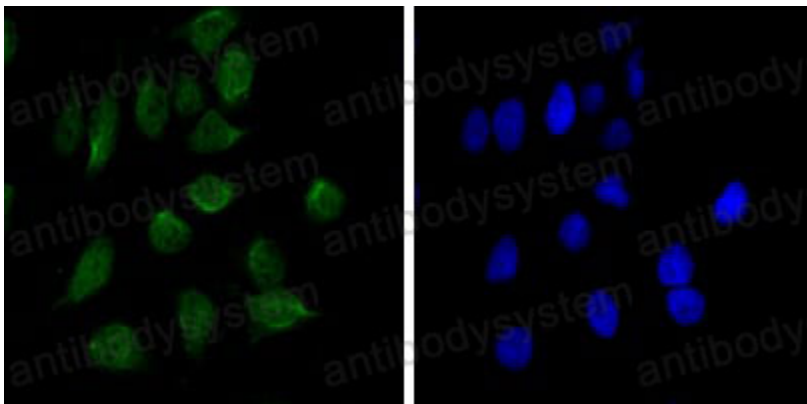
**Note**

For research use only.

**Data Image**

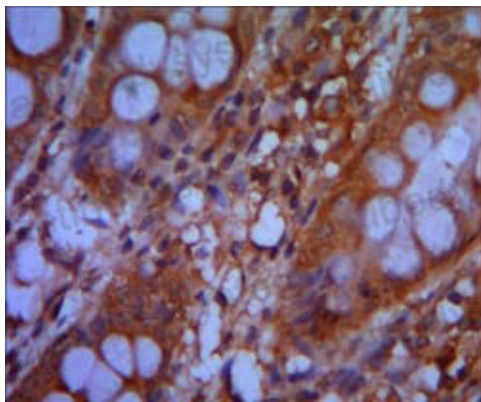
Flow Cytometry

Flow cytometric analysis of K562 cells using CHD3 mouse mAb (green) and negative control (purple).



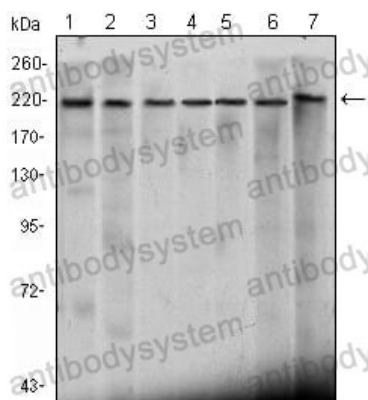
Immunofluorescence

Immunofluorescence analysis of HeLa cells using CHD3 mouse mAb (green). Blue: DRAQ5 fluorescent DNA dye.



Immunohistochemical

Immunohistochemical analysis of paraffin-embedded human colon cancer tissues using CHD3 mouse mAb with DAB staining.



Western blot

Western blot analysis using CHD3 mouse mAb against Hela (1), K562 (2), Jurkat (3), NTERA-2 (4), HEK293 (5), Raji (6) cell lysate and mouse brain (7) tissue lysate.