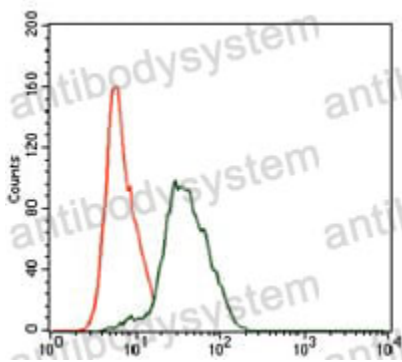


Anti-TWF1 Antibody (R3R84)

Summary

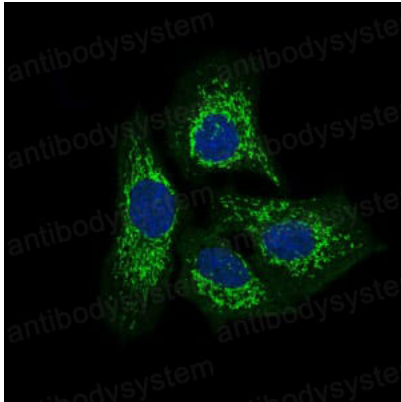
| | |
|------------------------------|---|
| Catalog No. | RHG28901 |
| Clone ID | R3R84 |
| Host species | Mouse |
| Tested applications | ELISA: 1:10000, FCM: 1:200-1:400, IF: 1:100, IHC: 1:200-1:1000 |
| Species reactivity | Human |
| Form | Liquid |
| Storage buffer | 0.01M PBS, pH 7.4, 0.05% Sodium Azide. |
| Concentration | 1 mg/ml |
| Purity | >95% as determined by SDS-PAGE. |
| Clonality | Monoclonal |
| Isotype | IgG1 |
| Applications | ELISA, FCM, IF, IHC |
| Target | TWF1, Twinfilin-1, Protein tyrosine kinase 9, PTK9, Protein A6 |
| Purification | Protein A/G purified from cell culture supernatant. |
| Endotoxin level | Please contact with the lab for this information. |
| Accession | Q12792 |
| Stability and Storage | Use a manual defrost freezer and avoid repeated freeze-thaw cycles. Store at 4°C short term (1-2 weeks). Store at -20°C 12 months. Store at -80°C long term. |
| Note | For research use only. |

Data Image



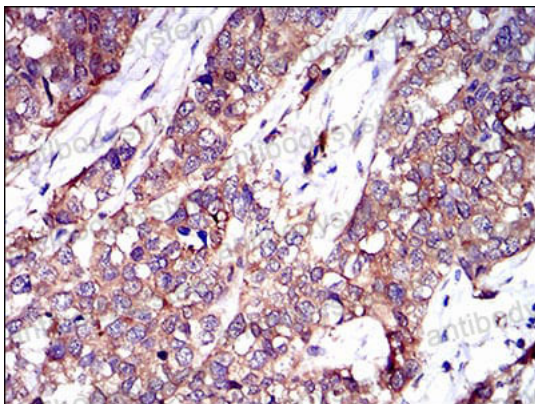
Flow Cytometry

Flow cytometric analysis of HeLa cells using TWF1 mouse mAb (green) and negative control (red).



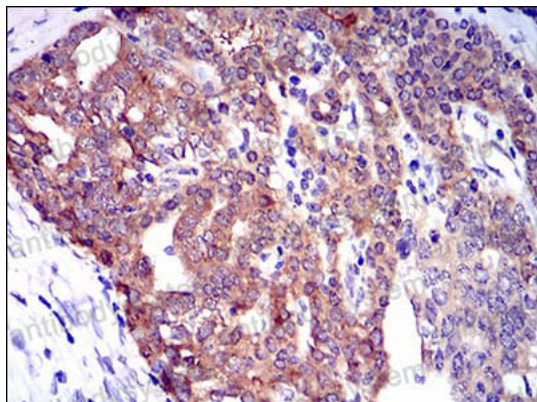
Immunofluorescence

Immunofluorescence analysis of HeLa cells using TWF1 mouse mAb (green). Blue: DRAQ5 fluorescent DNA dye.



Immunohistochemical

Immunohistochemical analysis of paraffin-embedded human bladder cancer tissues using TWF1 mouse mAb with DAB staining.



Immunohistochemical

Immunohistochemical analysis of paraffin-embedded human ovarian cancer tissues using TWF1 mouse mAb with DAB staining.