

# Anti-FOXO1 Antibody (R3R83)

## Summary

---

<b>Catalog No.</b>	RHG28502
<b>Clone ID</b>	R3R83
<b>Host species</b>	Mouse
<b>Tested applications</b>	ELISA: 1:10000, FCM: 1:200-1:400, IF: 1:200-1:1000, IHC: 1:200-1:1000, WB: 1:500-1:2000
<b>Species reactivity</b>	Human, Mouse, Rat, Rabbit, Monkey
<b>Form</b>	Liquid
<b>Storage buffer</b>	0.01M PBS, pH 7.4, 0.05% Sodium Azide.
<b>Concentration</b>	1 mg/ml
<b>Purity</b>	>95% as determined by SDS-PAGE.
<b>Clonality</b>	Monoclonal
<b>Isotype</b>	IgG1
<b>Applications</b>	ELISA, FCM, IF, IHC, WB
<b>Target</b>	Forkhead box protein O1, FKHR, FOXO1A, Forkhead in rhabdomyosarcoma, Forkhead box protein O1A, FOXO1
<b>Purification</b>	Protein A/G purified from cell culture supernatant.
<b>Endotoxin level</b>	Please contact with the lab for this information.
<b>Accession</b>	Q12778

**Stability and Storage**

Use a manual defrost freezer and avoid repeated freeze-thaw cycles.

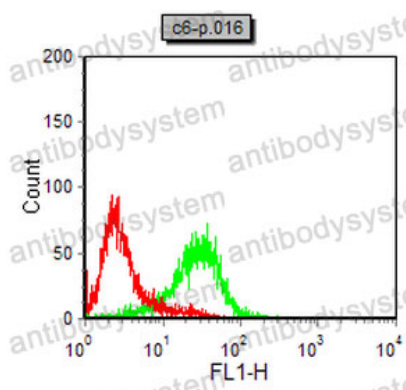
Store at 4°C short term (1-2 weeks). Store at -20°C 12 months. Store at -80°C long term.

**Note**

For research use only.

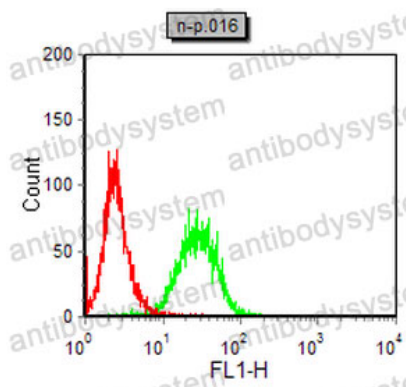
## Data Image

---



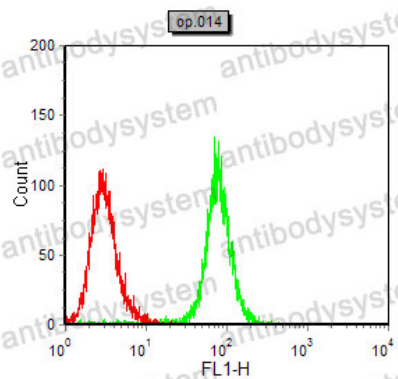
Flow Cytometry

Flow cytometric analysis of C6 cells using FOXO1 mouse mAb (green) and negative control (red).



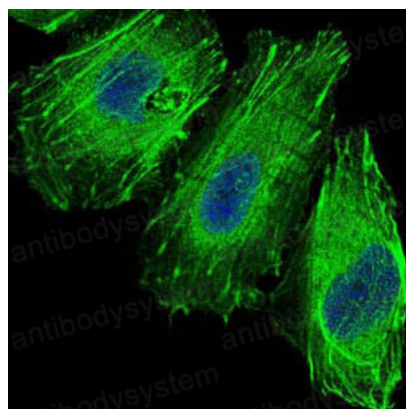
Flow Cytometry

Flow cytometric analysis of NIH/3T3 cells using FOXO1 mouse mAb (green) and negative control (red).



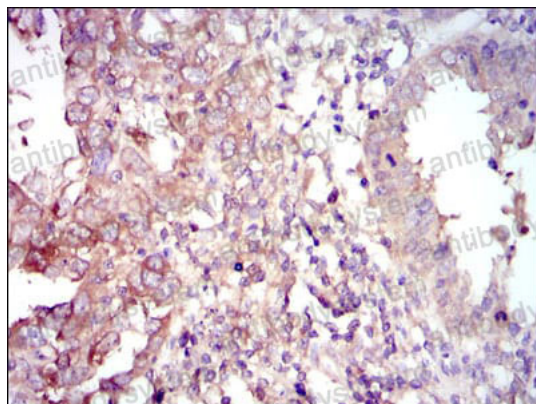
Flow Cytometry

Flow cytometric analysis of COS7 cells using FOXO1 mouse mAb (green) and negative control (red).



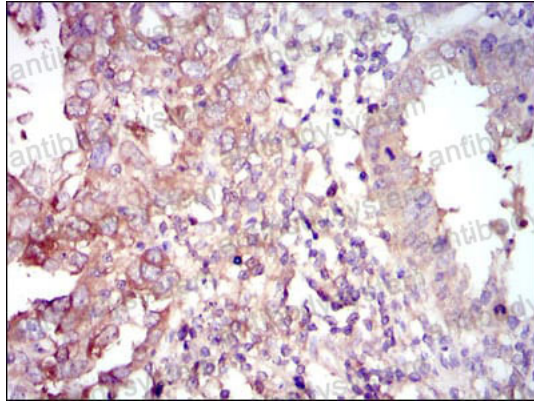
Immunofluorescence

Immunofluorescence analysis of HeLa cells using FOXO1 mouse mAb (green). Blue: DRAQ5 fluorescent DNA dye.



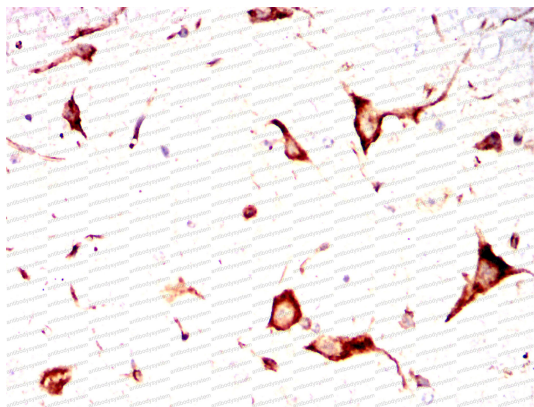
Immunohistochemical

Immunohistochemical analysis of paraffin-embedded human intima cancer tissues using FOXO1 mouse mAb with DAB staining.



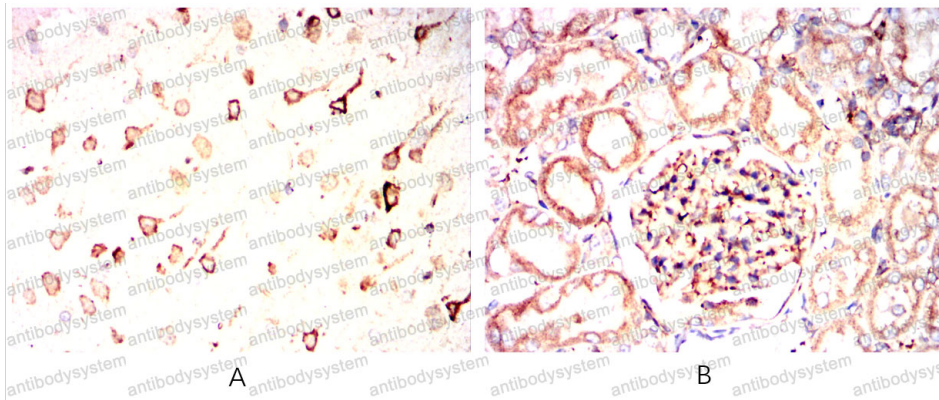
Immunohistochemical

Immunohistochemical analysis of paraffin-embedded human intima cancer tissues using FOXO1 mouse mAb with DAB staining.



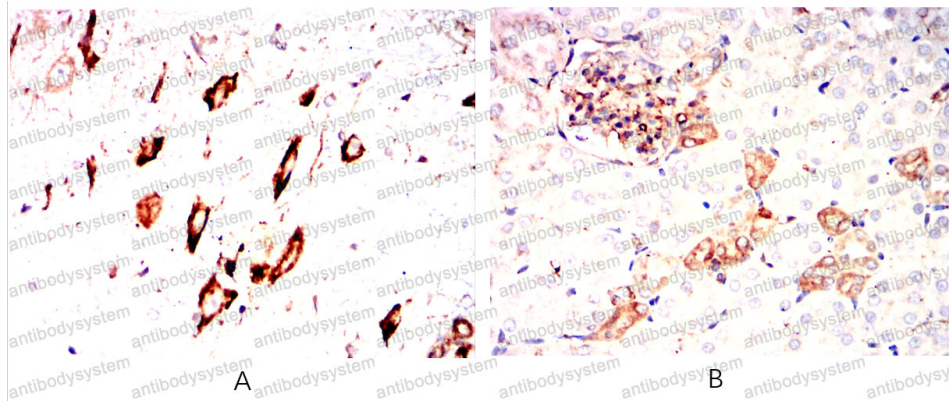
Immunohistochemical

Immunohistochemical analysis of paraffin-embedded Mouse cerebellum using FOXO1 mouse mAb with DAB staining.



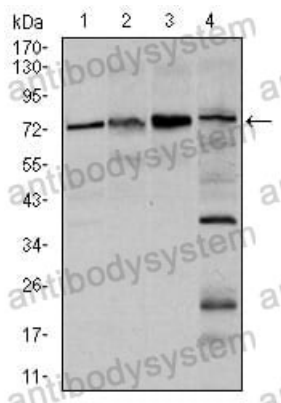
Immunohistochemical

Immunohistochemical analysis of paraffin-embedded Rat brain(A)Rat kidney(B) using FOXO1 mouse mAb with DAB staining.



Immunohistochemical analysis of paraffin-embedded Rabbit spinal cord(A) Rabbit kidney(B) using FOXO1 mouse mAb with DAB staining.

## Immunohistochemical



Western blot

Western blot analysis using FOXO1 mouse mAb against HeLa (1), HEK293 (2), MCF-7(3), and C6 (4) cell lysate.