

Anti-PPID Antibody (R3R72)

Summary

Catalog No.	RHG17701
Clone ID	R3R72
Host species	Mouse
Tested applications	ELISA: 1:10000, FCM: 1:200-1:400, IHC: 1:200-1:1000
Species reactivity	Human
Form	Liquid
Storage buffer	0.01M PBS, pH 7.4, 0.05% Sodium Azide.
Concentration	1 mg/ml
Purity	>95% as determined by SDS-PAGE.
Clonality	Monoclonal
Isotype	IgG1
Applications	ELISA, FCM, IHC
Target	Rotamase D, 40 kDa peptidyl-prolyl cis-trans isomerase, PPID, Cyclophilin-40, Peptidyl-prolyl cis-trans isomerase D, PPIase D, CYP40, CYP-40, Cyclophilin-related protein, CYPD
Purification	Protein A/G purified from cell culture supernatant.
Endotoxin level	Please contact with the lab for this information.
Accession	Q08752

Stability and Storage

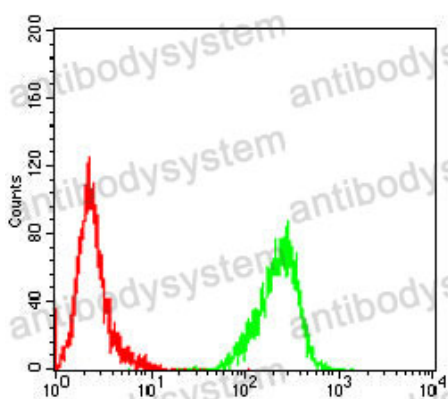
Use a manual defrost freezer and avoid repeated freeze-thaw cycles.

Store at 4°C short term (1-2 weeks). Store at -20°C 12 months. Store at -80°C long term.

Note

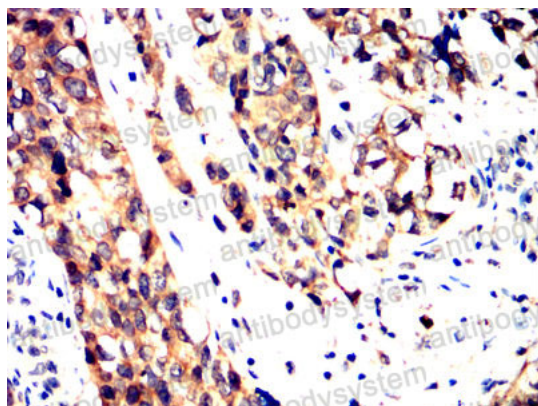
For research use only.

Data Image



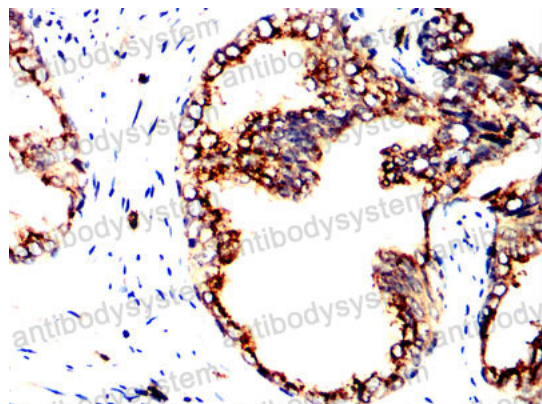
Flow Cytometry

Flow cytometric analysis of Jurkat cells using PPID mouse mAb (green) and negative control (red).



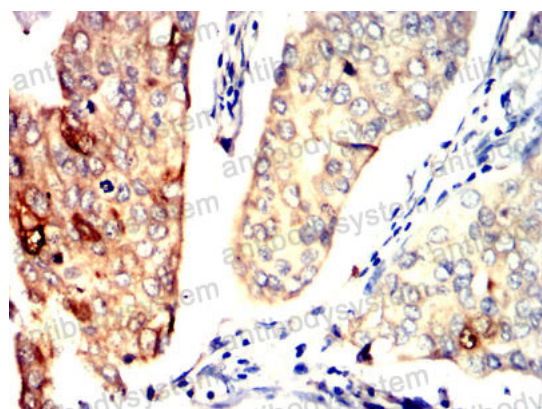
Immunohistochemical

Immunohistochemical analysis of paraffin-embedded human bladder cancer tissues using PPID mouse mAb with DAB staining.



Immunohistochemical

Immunohistochemical analysis of paraffin-embedded human prostate cancer tissues using PPID mouse mAb with DAB staining.



Immunohistochemical

Immunohistochemical analysis of paraffin-embedded human breast cancer tissues using PPID mouse mAb with DAB staining.