

Anti-GM130/GOLGA2 Antibody (R3R68)

Summary

Catalog No.	RHG16103
Clone ID	R3R68
Host species	Mouse
Tested applications	ELISA: 1:10000, FCM: 1:200-1:400, IF: 1:50-1:200, IHC: 1:200-1:1000, WB: 1:500-1:2000
Species reactivity	Human
Form	Liquid
Storage buffer	0.01M PBS, pH 7.4, 0.05% Sodium Azide.
Concentration	1 mg/ml
Purity	>95% as determined by SDS-PAGE.
Clonality	Monoclonal
Isotype	IgG1
Applications	ELISA, FCM, IF, IHC, WB
Target	130 kDa cis-Golgi matrix protein, GM130, GM130 autoantigen, Golgin-95, Golgin subfamily A member 2, GOLGA2
Purification	Protein A/G purified from cell culture supernatant.
Endotoxin level	Please contact with the lab for this information.
Accession	Q08379

Stability and Storage

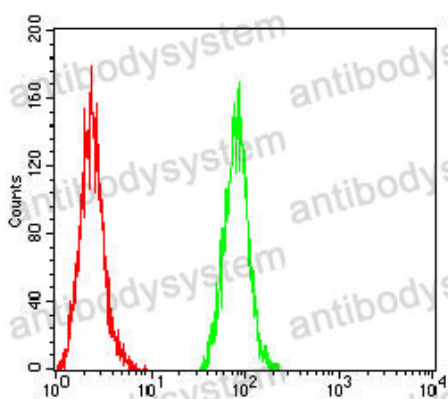
Use a manual defrost freezer and avoid repeated freeze-thaw cycles.

Store at 4°C short term (1-2 weeks). Store at -20°C 12 months. Store at -80°C long term.

Note

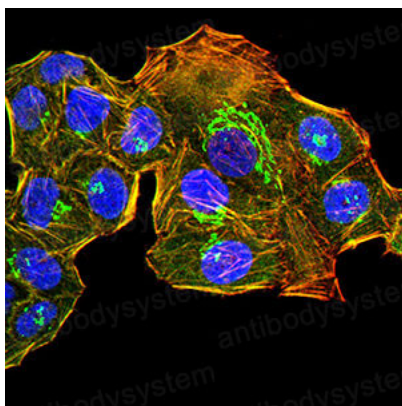
For research use only.

Data Image



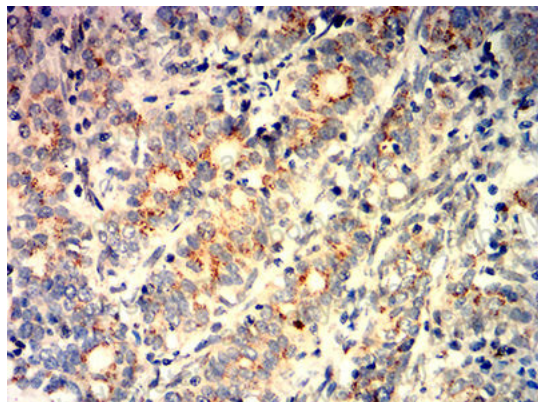
Flow Cytometry

Flow cytometric analysis of Hela cells using GOLGA2 mouse mAb (green) and negative control (red).



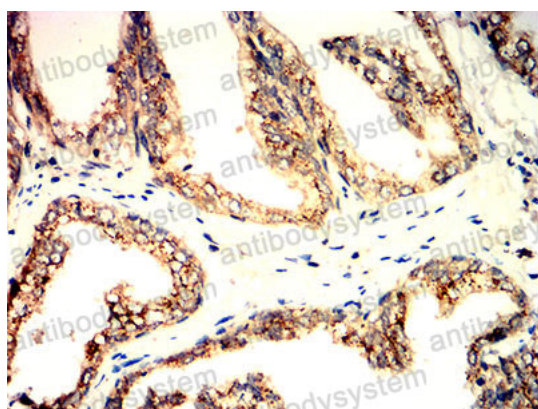
Immunofluorescence

Immunofluorescence analysis of Hela cells using GOLGA2 mouse mAb (green). Blue: DRAQ5 fluorescent DNA dye. Red: Actin filaments have been labeled with Alexa Fluor- 555 phalloidin.



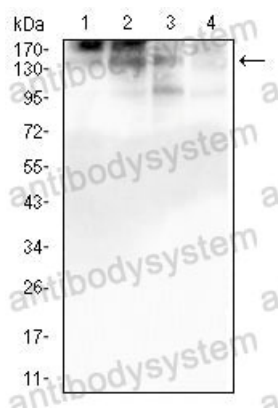
Immunohistochemical

Immunohistochemical analysis of paraffin-embedded human cervical cancer tissues using GOLGA2 mouse mAb with DAB staining.



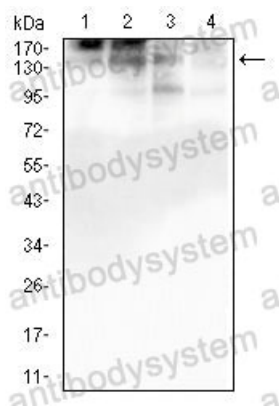
Immunohistochemical

Immunohistochemical analysis of paraffin-embedded human prostate cancer tissues using GOLGA2 mouse mAb with DAB staining.



Western blot

Western blot analysis using GOLGA2 mouse mAb against HepG2 (1), Hela (2), K562 (3), and HEK293 (4) cell lysate.



Western blot

Western blot analysis using GOLGA2 mouse mAb against HepG2 (1), HeLa (2), K562 (3), and HEK293 (4) cell lysate.