

Anti-CDw210b/IL10RB Antibody (R3R63)

Summary

Catalog No.	RHG15701
Clone ID	R3R63
Host species	Mouse
Tested applications	ELISA: 1:10000, FCM: 1:200-1:400, WB: 1:500-1:2000
Species reactivity	Human, Rat
Form	Liquid
Storage buffer	0.01M PBS, pH 7.4, 0.05% Sodium Azide.
Concentration	1 mg/ml
Purity	>95% as determined by SDS-PAGE.
Clonality	Monoclonal
Isotype	IgG1
Applications	ELISA, FCM, WB
Target	IL10RB, IL-10 receptor subunit beta, CDw210b, IL-10R subunit beta, Cytokine receptor family 2 member 4, Interleukin-10 receptor subunit 2, IL-10R subunit 2, CRF2-4, D21S58, IL-10R2, D21S66, Cytokine receptor class-II member 4, Interleukin-10 receptor subunit beta, CRFB4, IL-10RB
Purification	Protein A/G purified from cell culture supernatant.
Endotoxin level	Please contact with the lab for this information.
Accession	Q08334

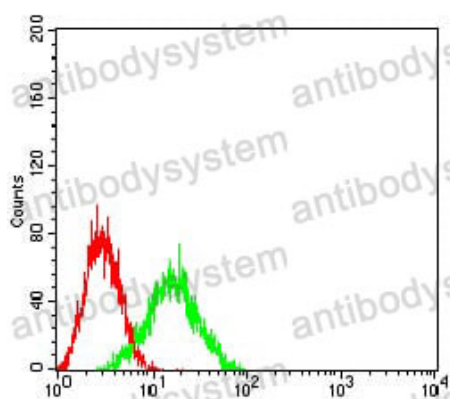
Stability and Storage

Use a manual defrost freezer and avoid repeated freeze-thaw cycles.

Store at 4°C short term (1-2 weeks). Store at -20°C 12 months. Store at -80°C long term.

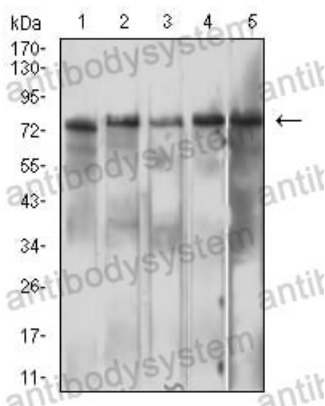
Note

For research use only.

Data Image

Flow Cytometry

Flow cytometric analysis of HL-60 cells using IL10RB mouse mAb (green) and negative control (red).



Western blot

Western blot analysis using IL10RB mouse mAb against Hela (1), Jurkat (2), Ramos (3), Raji (4), and C6 (5) cell lysate.