

# Anti-FOXM1 Antibody (R3R62)

## Summary

---

<b>Catalog No.</b>	RHG14701
<b>Clone ID</b>	R3R62
<b>Host species</b>	Mouse
<b>Tested applications</b>	ELISA: 1:10000, FCM: 1:200-1:400
<b>Species reactivity</b>	Human
<b>Form</b>	Liquid
<b>Storage buffer</b>	0.01M PBS, pH 7.4, 0.05% Sodium Azide.
<b>Concentration</b>	1 mg/ml
<b>Purity</b>	>95% as determined by SDS-PAGE.
<b>Clonality</b>	Monoclonal
<b>Isotype</b>	IgG1
<b>Applications</b>	ELISA, FCM
<b>Target</b>	M-phase phosphoprotein 2, HFH-11, Winged-helix factor from INS-1 cells, HNF-3/fork-head homolog 11, MPP2, Hepatocyte nuclear factor 3 forkhead homolog 11, Forkhead box protein M1, WIN, Forkhead-related protein FKHL16, FOXM1, FKHL16, HFH11, MPM-2 reactive phosphoprotein 2, Transcription factor Trident
<b>Purification</b>	Protein A/G purified from cell culture supernatant.
<b>Endotoxin level</b>	Please contact with the lab for this information.
<b>Accession</b>	Q08050

## Recombinant Proteins &amp; Antibodies

**Stability and Storage**

Use a manual defrost freezer and avoid repeated freeze-thaw cycles.

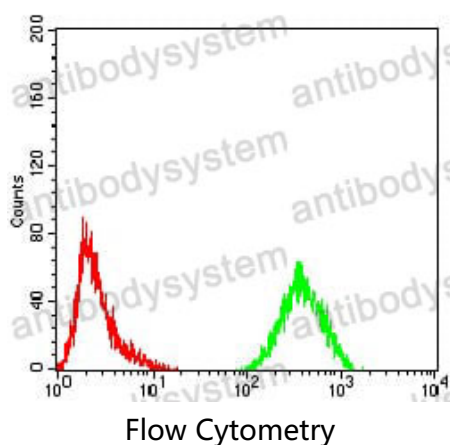
Store at 4°C short term (1-2 weeks). Store at -20°C 12 months. Store at -80°C long term.

**Note**

For research use only.

**Data Image**

---



Flow cytometric analysis of HeLa cells using FOXm1 mouse mAb (green) and negative control (red).