

Anti-RING1 Antibody (R3R33)

Summary

Catalog No.	RHG09702
Clone ID	R3R33
Host species	Mouse
Tested applications	ELISA: 1:10000, FCM: 1:200-1:400, IHC: 1:200-1:1000, WB: 1:500-1:2000
Species reactivity	Human
Form	Liquid
Storage buffer	0.01M PBS, pH 7.4, 0.05% Sodium Azide.
Concentration	1 mg/ml
Purity	>95% as determined by SDS-PAGE.
Clonality	Monoclonal
Isotype	IgG1
Applications	ELISA, FCM, IHC, WB
Target	RING-type E3 ubiquitin transferase RING1, Really interesting new gene 1 protein, RING finger protein 1, E3 ubiquitin-protein ligase RING1, Polycomb complex protein RING1, RNF1, RING1
Purification	Protein A/G purified from cell culture supernatant.
Endotoxin level	Please contact with the lab for this information.
Accession	Q06587

Stability and Storage

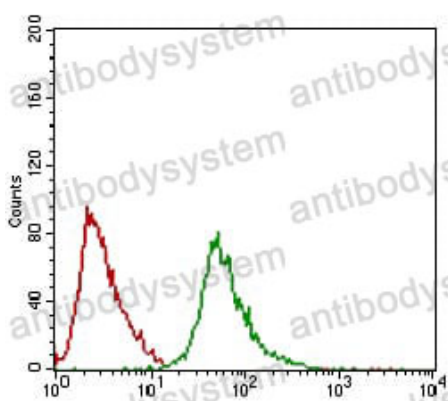
Use a manual defrost freezer and avoid repeated freeze-thaw cycles.

Store at 4°C short term (1-2 weeks). Store at -20°C 12 months. Store at -80°C long term.

Note

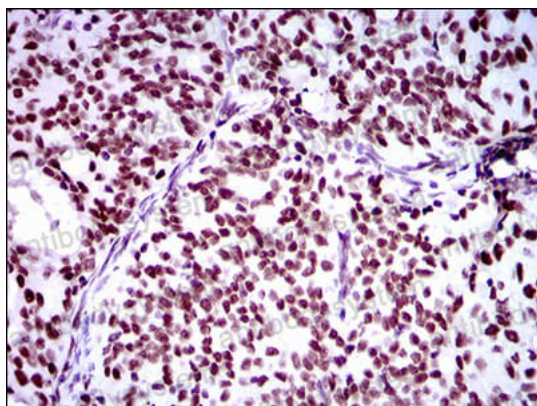
For research use only.

Data Image



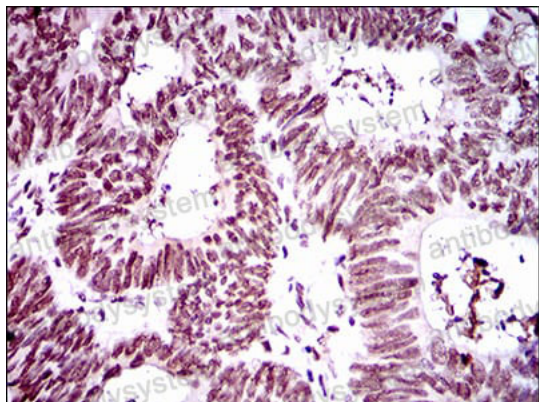
Flow Cytometry

Flow cytometric analysis of Hela cells using Ring1 mouse mAb (green) and negative control (red).



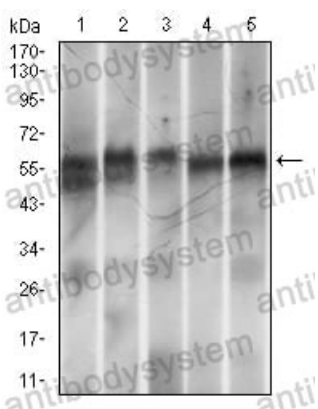
Immunohistochemical

Immunohistochemical analysis of paraffin-embedded human cervical cancer tissues using Ring1 mouse mAb with DAB staining.



Immunohistochemical

Immunohistochemical analysis of paraffin-embedded human rectum cancer tissues using Ring1 mouse mAb with DAB staining.



Western blot

Western blot analysis using Ring1 mouse mAb against MOLT-4 (1), LNCaP (2), Hela (3), HEK-293 (4) and Jurkat (5) cell lysate.