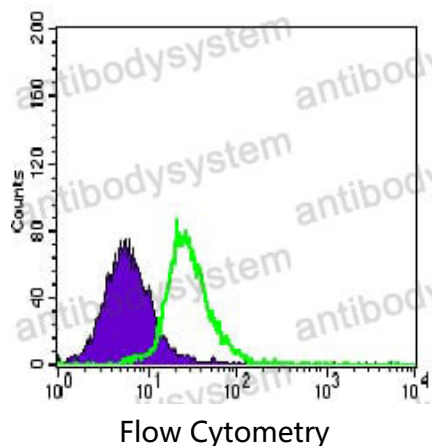


Anti-MEF2C Antibody (R3R26)

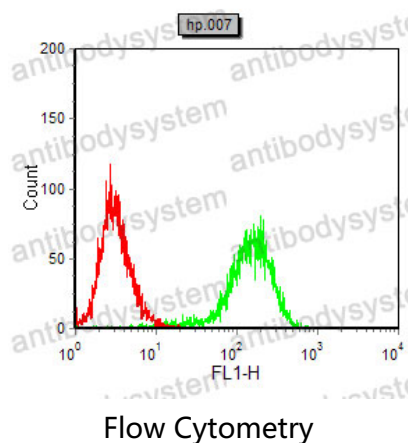
Summary

Catalog No.	RHG08704
Clone ID	R3R26
Host species	Mouse
Tested applications	ELISA: 1:10000, FCM: 1:200-1:400, IHC: 1:100-1:500, WB: 1:500-1:2000
Species reactivity	Human, Mouse, Rat, Rabbit, Monkey
Form	Liquid
Storage buffer	0.01M PBS, pH 7.4, 0.05% Sodium Azide.
Concentration	1 mg/ml
Purity	>95% as determined by SDS-PAGE.
Clonality	Monoclonal
Isotype	IgG1
Applications	ELISA, FCM, IHC, WB
Target	MEF2C, Myocyte-specific enhancer factor 2C, Myocyte enhancer factor 2C
Purification	Protein A/G purified from cell culture supernatant.
Endotoxin level	Please contact with the lab for this information.
Accession	Q06413
Stability and Storage	Use a manual defrost freezer and avoid repeated freeze-thaw cycles. Store at 4°C short term (1-2 weeks). Store at -20°C 12 months. Store at -80°C long term.
Note	For research use only.

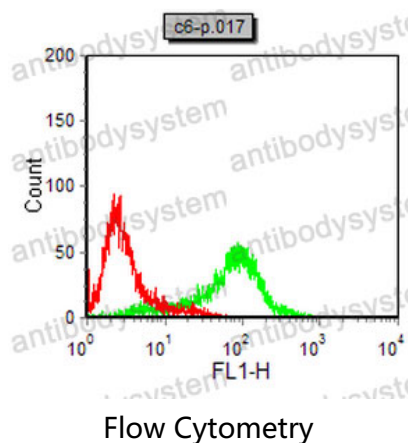
Data Image



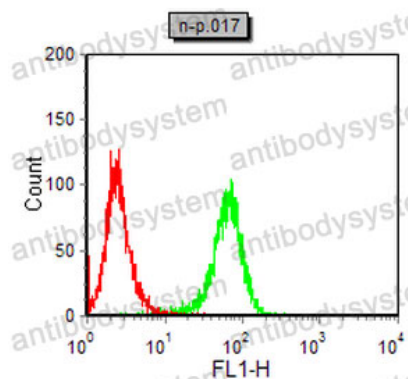
Flow cytometric analysis of HeLa cells using MEF2C mouse mAb (green) and negative control (purple).



Flow cytometric analysis of HeLa cells using MEF2C mouse mAb (green) and negative control (red).

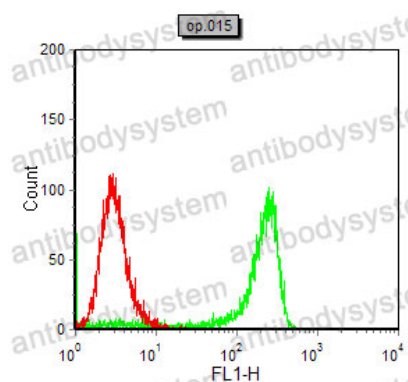


Flow cytometric analysis of C6 cells using MEF2C mouse mAb (green) and negative control (red).



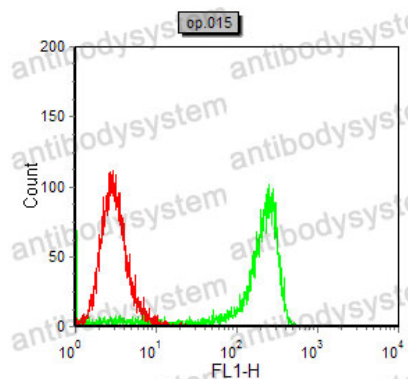
Flow Cytometry

Flow cytometric analysis of NIH/3T3 cells using MEF2C mouse mAb (green) and negative control (red).



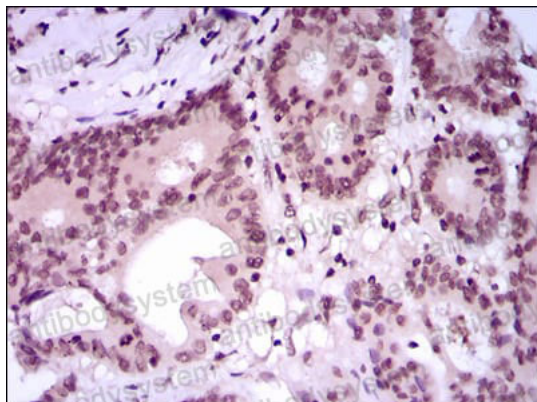
Flow Cytometry

Flow cytometric analysis of COS7 cells using MEF2C mouse mAb (green) and negative control (red).



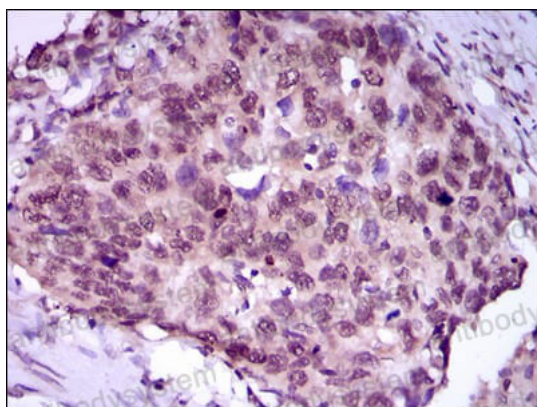
Flow Cytometry

Flow cytometric analysis of COS7 cells using MEF2C mouse mAb (green) and negative control (red).



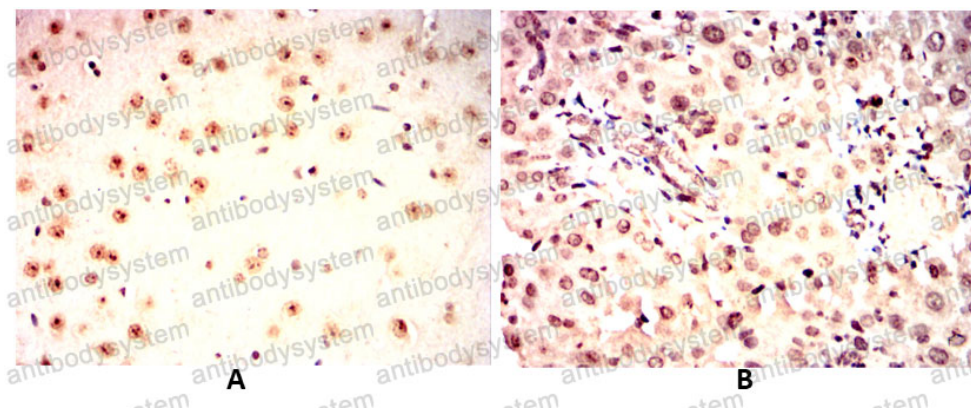
Immunohistochemical

Immunohistochemical analysis of paraffin-embedded human colon cancer tissues using MEF2C mouse mAb with DAB staining.



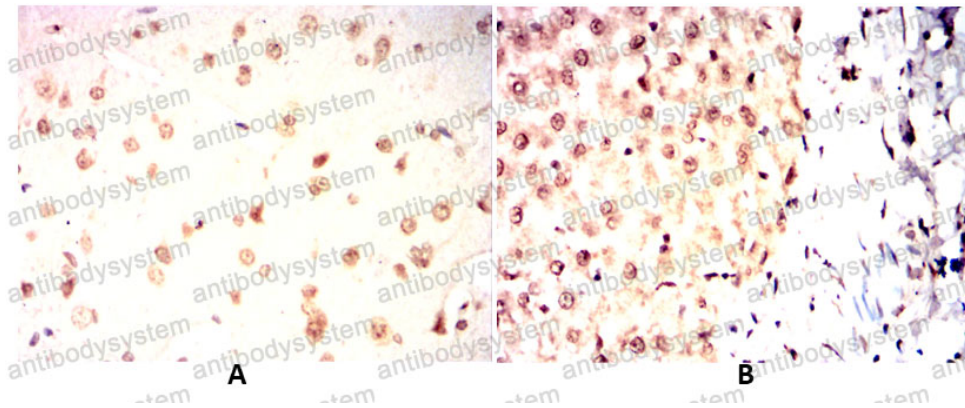
Immunohistochemical

Immunohistochemical analysis of paraffin-embedded human esophageal cancer tissues using MEF2C mouse mAb with DAB staining.



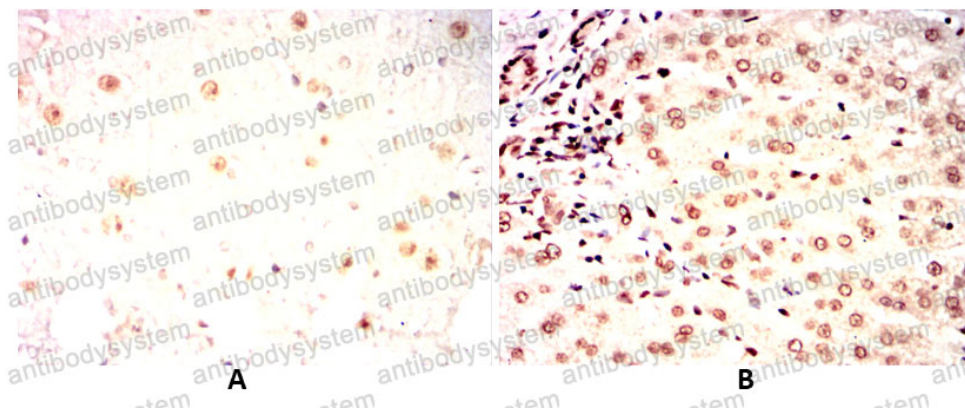
Immunohistochemical

Immunohistochemical analysis of paraffin-embedded Mouse brain(A) Mouse liver(B) using MEF2C mouse mAb with DAB staining.



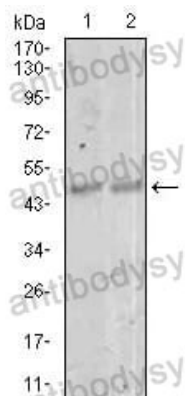
Immunohistochemical analysis of paraffin-embedded Rat brain(A) Rat liver(B) using MEF2C mouse mAb with DAB staining.

Immunohistochemical



Immunohistochemical analysis of paraffin-embedded Rabbit brain(A) Rabbit liver(B) using MEF2C mouse mAb with DAB staining.

Immunohistochemical



Western blot analysis using MEF2C mouse mAb against NIH3T3 (1) and 3T3-L1 (2) cell lysate.

Western blot