

Anti-ZBTB16 Antibody (R3R15)

Summary

Catalog No.	RHG05103
Clone ID	R3R15
Host species	Mouse
Tested applications	IF: 1:200-1:1000, WB: 1:500-1:2000
Species reactivity	Human
Form	Liquid
Storage buffer	0.01M PBS, pH 7.4, 0.05% Sodium Azide.
Concentration	1 mg/ml
Purity	>95% as determined by SDS-PAGE.
Clonality	Monoclonal
Isotype	IgG1
Applications	IF, WB
Target	Zinc finger protein 145, ZNF145, Zinc finger protein PLZF, Zinc finger and BTB domain-containing protein 16, Promyelocytic leukemia zinc finger protein, ZBTB16, PLZF
Purification	Protein A/G purified from cell culture supernatant.
Endotoxin level	Please contact with the lab for this information.
Accession	Q05516

Stability and Storage

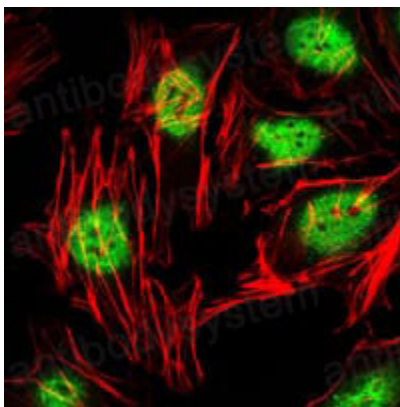
Use a manual defrost freezer and avoid repeated freeze-thaw cycles.

Store at 4°C short term (1-2 weeks). Store at -20°C 12 months. Store at -80°C long term.

Note

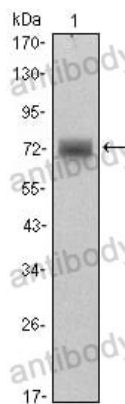
For research use only.

Data Image



Immunofluorescence

Immunofluorescence analysis of HeLa cells using ZBTB16 mouse mAb (green). Red: Actin filaments have been labeled with Alexa Fluor-555 phalloidin.



Western blot

Western blot analysis using ZBTB16 mouse mAb against HeLa (1) cell lysate.