

# Anti-GLO1 Antibody (R3Q98)

## Summary

---

|                            |   |
|----------------------------|---|
| <b>Catalog No.</b>         | RHG02702  |
| <b>Clone ID</b>            | R3Q98   |
| <b>Host species</b>        | Mouse   |
| <b>Tested applications</b> | IHC: 1:20-1:100   |
| <b>Species reactivity</b>  | Human   |
| <b>Form</b>                | Liquid  |
| <b>Storage buffer</b>      | 0.01M PBS, pH 7.4, 0.05% Sodium Azide.  |
| <b>Concentration</b>       | 1 mg/ml   |
| <b>Purity</b>              | >95% as determined by SDS-PAGE.   |
| <b>Clonality</b>           | Monoclonal  |
| <b>Isotype</b>             | IgG1  |
| <b>Applications</b>        | IHC   |
| <b>Target</b>              | Glyoxalase I, Glx I, Ketone-aldehyde mutase, GLO1, Lactoylglutathione lyase, Methylglyoxalase, S-D-lactoylglutathione methylglyoxal lyase, Aldoketomutase |
| <b>Purification</b>        | Protein A/G purified from cell culture supernatant.   |
| <b>Endotoxin level</b>     | Please contact with the lab for this information.   |
| <b>Accession</b>           | Q04760  |

**Stability and Storage**

Use a manual defrost freezer and avoid repeated freeze-thaw cycles.

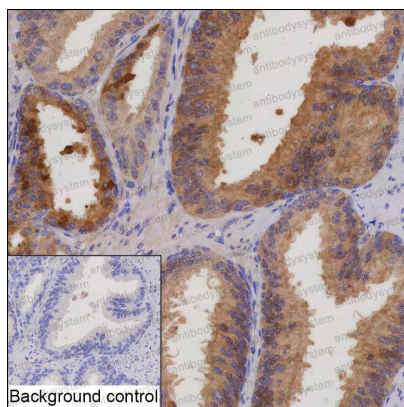
Store at 4°C short term (1-2 weeks). Store at -20°C 12 months. Store at -80°C long term.

**Note**

For research use only.

## Data Image

---



Immunohistochemical

IHC-P analysis of prostate cancer tissue by GLO1 antibody (RHG02702). IHC-P was performed using sections of the formalin-fixed paraffin-embedded prostate cancer tissue; Result: Tumor cells are positively stained at the cytoplasm and nuclei.