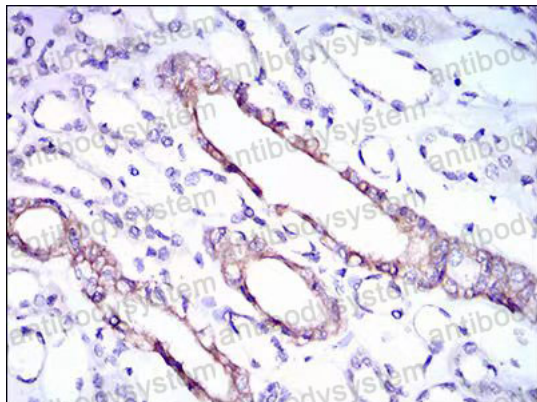


Anti-RPL18A Antibody (R3Q62)

Summary

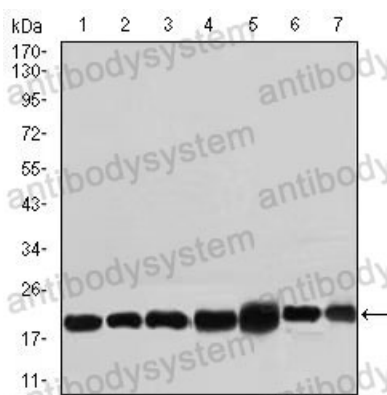
Catalog No.	RHF94601
Clone ID	R3Q62
Host species	Mouse
Tested applications	IHC: 1:200-1:1000, WB: 1:500-1:2000
Species reactivity	Human, Mouse
Form	Liquid
Storage buffer	0.01M PBS, pH 7.4, 0.05% Sodium Azide.
Concentration	1 mg/ml
Purity	>95% as determined by SDS-PAGE.
Clonality	Monoclonal
Isotype	IgG1
Applications	IHC, WB
Target	Large ribosomal subunit protein eL20, RPL18A, 60S ribosomal protein L18a
Purification	Protein A/G purified from cell culture supernatant.
Endotoxin level	Please contact with the lab for this information.
Accession	Q02543
Stability and Storage	Use a manual defrost freezer and avoid repeated freeze-thaw cycles. Store at 4°C short term (1-2 weeks). Store at -20°C 12 months. Store at -80°C long term.
Note	For research use only.

Data Image



Immunohistochemical

Immunohistochemical analysis of paraffin-embedded kidney tissues using RPL18A mouse mAb with DAB staining



Western blot

Western blot analysis using RPL18A mouse mAb against NIH3T3 (1), HEK293 (2), HL60 (3), Jurkat (4), Raji (5), MOLT4 (6), and HeLa (7) cell lysate.