

Anti-ID2 Antibody (R3Q59)

Summary

Catalog No.	RHF93301
Clone ID	R3Q59
Host species	Mouse
Tested applications	ELISA: 1:10000, FCM: 1:200-1:400, IHC: 1:200-1:1000
Species reactivity	Human
Form	Liquid
Storage buffer	0.01M PBS, pH 7.4, 0.05% Sodium Azide.
Concentration	1 mg/ml
Purity	>95% as determined by SDS-PAGE.
Clonality	Monoclonal
Isotype	IgG1
Applications	ELISA, FCM, IHC
Target	Inhibitor of DNA binding 2, ID2, Class B basic helix-loop-helix protein 26, DNA-binding protein inhibitor ID-2, bHLHb26, BHLHB26, Inhibitor of differentiation 2
Purification	Protein A/G purified from cell culture supernatant.
Endotoxin level	Please contact with the lab for this information.
Accession	Q02363

Stability and Storage

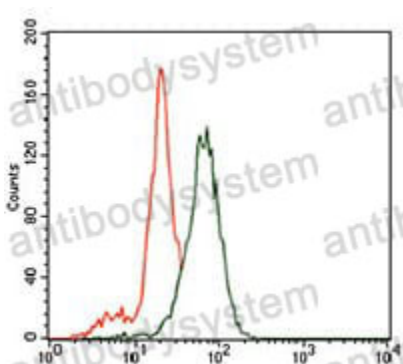
Use a manual defrost freezer and avoid repeated freeze-thaw cycles.

Store at 4°C short term (1-2 weeks). Store at -20°C 12 months. Store at -80°C long term.

Note

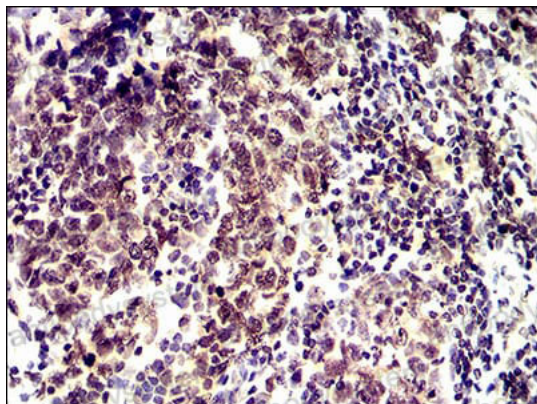
For research use only.

Data Image



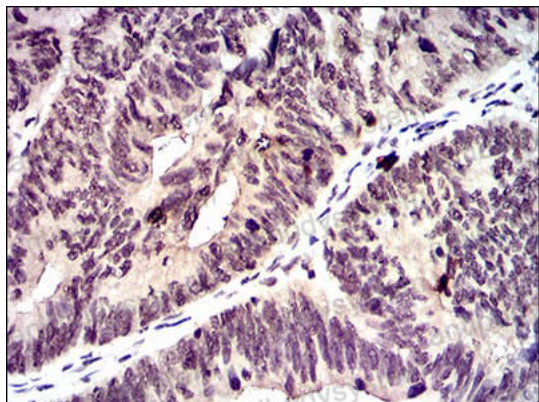
Flow Cytometry

Flow cytometric analysis of SK-N-SH cells using ID2 mouse mAb (green) and negative control (purple).



Immunohistochemical

Immunohistochemical analysis of paraffin-embedded human breast cancer tissues using ID2 mouse mAb with DAB staining.



Immunohistochemical

Immunohistochemical analysis of paraffin-embedded human rectum cancer tissues using ID2 mouse mAb with DAB staining.