

Anti-BDH1 Antibody (R3Q58)

Summary

Catalog No.	RHF93201
Clone ID	R3Q58
Host species	Mouse
Tested applications	IHC: 1:200-1:1000, WB: 1:500-1:2000
Species reactivity	Human, Mouse
Form	Liquid
Storage buffer	0.01M PBS, pH 7.4, 0.05% Sodium Azide.
Concentration	1 mg/ml
Purity	>95% as determined by SDS-PAGE.
Clonality	Monoclonal
Isotype	IgG1
Applications	IHC, WB
Target	BDH1, 3-hydroxybutyrate dehydrogenase, SDR9C1, Short chain dehydrogenase/reductase family 9C member 1, BDH, D-beta-hydroxybutyrate dehydrogenase, mitochondrial
Purification	Protein A/G purified from cell culture supernatant.
Endotoxin level	Please contact with the lab for this information.
Accession	Q02338

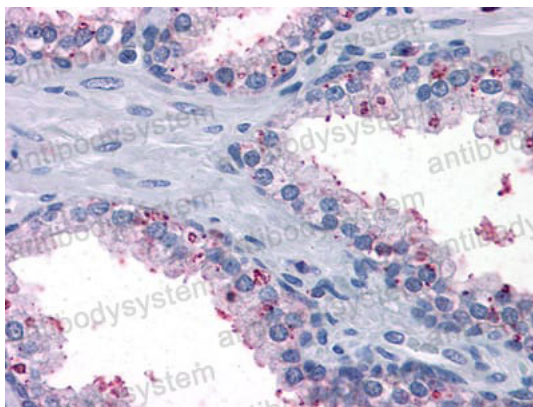
Stability and Storage

Use a manual defrost freezer and avoid repeated freeze-thaw cycles.

Store at 4°C short term (1-2 weeks). Store at -20°C 12 months. Store at -80°C long term.

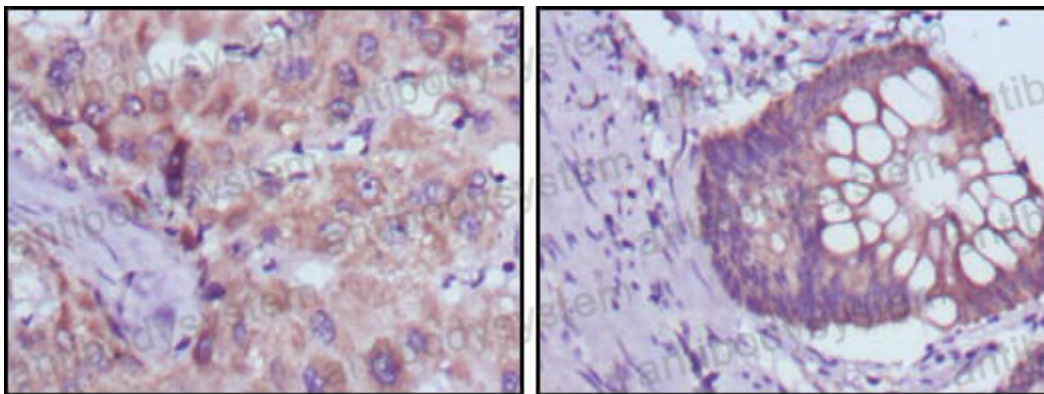
Note

For research use only.

Data Image

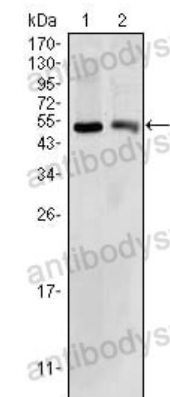
Immunohistochemical

Immunohistochemical analysis of paraffin-embedded human Prostate tissues using anti-BDH1 mouse mAb



Immunohistochemical

Immunohistochemical analysis of paraffin-embedded human liver cancer (left) and colorectal cancer tissues (right) using BDH1 mouse mAb with DAB staining.



Western blot

Western blot analysis
using BDH1 mouse mAb
against HepG2 (1) and
NIH/3T3 (2) cell lysate.