

Anti-GUCY1A3 Antibody (R3Q54)

Summary

Catalog No.	RHF91702
Clone ID	R3Q54
Host species	Mouse
Tested applications	ELISA: 1:10000, FCM: 1:200-1:400, IF: 1:200-1:1000, IHC: 1:200-1:1000, WB: 1:500-1:2000
Species reactivity	Human
Form	Liquid
Storage buffer	0.01M PBS, pH 7.4, 0.05% Sodium Azide.
Concentration	1 mg/ml
Purity	>95% as determined by SDS-PAGE.
Clonality	Monoclonal
Isotype	IgG1
Applications	ELISA, FCM, IF, IHC, WB
Target	Guanylate cyclase soluble subunit alpha-3, GCS-alpha-3, GUCY1A3, GUCSA3, Soluble guanylate cyclase large subunit, GUC1A3, GUCY1A1, Guanylate cyclase soluble subunit alpha-1, GCS-alpha-1
Purification	Protein A/G purified from cell culture supernatant.
Endotoxin level	Please contact with the lab for this information.
Accession	Q02108

Stability and Storage

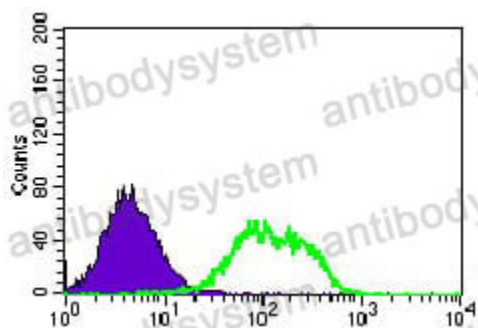
Use a manual defrost freezer and avoid repeated freeze-thaw cycles.

Store at 4°C short term (1-2 weeks). Store at -20°C 12 months. Store at -80°C long term.

Note

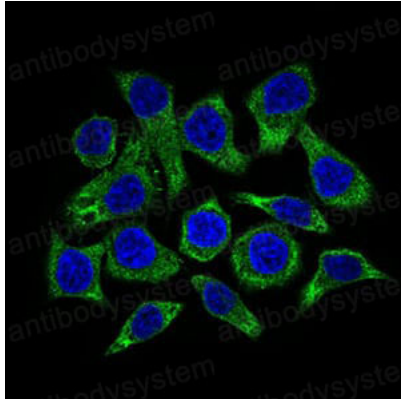
For research use only.

Data Image



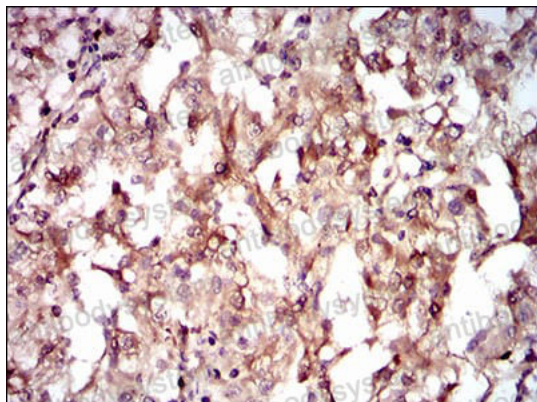
Flow Cytometry

Flow cytometric analysis of HEK293 cells using GUCY1A3 mouse mAb (green) and negative control (purple).



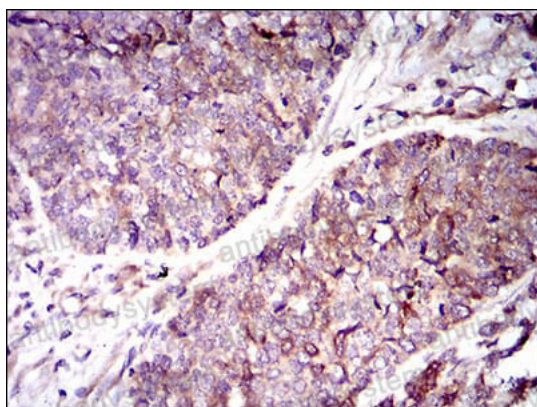
Immunofluorescence

Immunofluorescence analysis of HepG2 cells using GUCY1A3 mouse mAb (green). Blue: DRAQ5 fluorescent DNA dye.



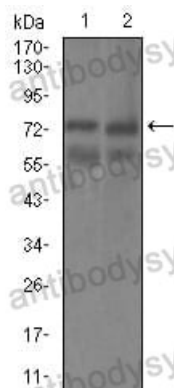
Immunohistochemical

Immunohistochemical analysis of paraffin-embedded human renal cancer tissues using GUCY1A3 mouse mAb with DAB staining.



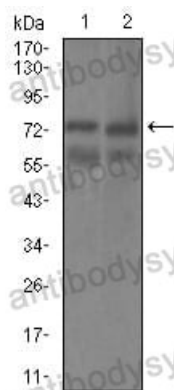
Immunohistochemical

Immunohistochemical analysis of paraffin-embedded human esophageal cancer tissues using GUCY1A3 mouse mAb with DAB staining.



Western blot

Western blot analysis using GUCY1A3 mouse mAb against HEK293 (1) and Raji (2) cell lysate.



Western blot

Western blot analysis using GUCY1A3 mouse mAb against HEK293 (1) and Raji (2) cell lysate.