

Anti-MEF2A Antibody (R3Q53)

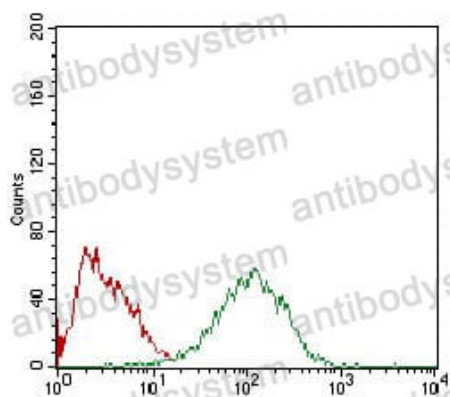
Summary

Catalog No.	RHF91202
Clone ID	R3Q53
Host species	Mouse
Tested applications	ELISA: 1:10000, FCM: 1:200-1:400, IF: 1:200-1:1000
Species reactivity	Human
Form	Liquid
Storage buffer	0.01M PBS, pH 7.4, 0.05% Sodium Azide.
Concentration	1 mg/ml
Purity	>95% as determined by SDS-PAGE.
Clonality	Monoclonal
Isotype	IgG1
Applications	ELISA, FCM, IF
Target	Myocyte-specific enhancer factor 2A, MEF2, Serum response factor-like protein 1, MEF2A
Purification	Protein A/G purified from cell culture supernatant.
Endotoxin level	Please contact with the lab for this information.
Accession	Q02078
Stability and Storage	Use a manual defrost freezer and avoid repeated freeze-thaw cycles. Store at 4°C short term (1-2 weeks). Store at -20°C 12 months. Store at -80°C long term.

Note

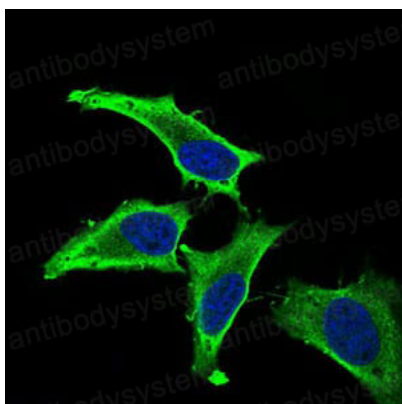
For research use only.

Data Image



Flow Cytometry

Flow cytometric analysis of HepG2 cells using MEF2A mouse mAb (green) and negative control (red).



Immunofluorescence

Immunofluorescence analysis of HeLa cells using MEF2A mouse mAb (green). Blue: DRAQ5 fluorescent DNA dye.