

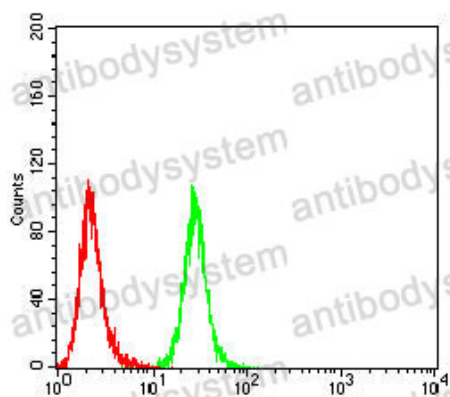
Anti-XPC Antibody (R3Q43)

Summary

Catalog No.	RHF89602
Clone ID	R3Q43
Host species	Mouse
Tested applications	ELISA: 1:10000, FCM: 1:200-1:400, WB: 1:500-1:2000
Species reactivity	Human
Form	Liquid
Storage buffer	0.01M PBS, pH 7.4, 0.05% Sodium Azide.
Concentration	1 mg/ml
Purity	>95% as determined by SDS-PAGE.
Clonality	Monoclonal
Isotype	IgG1
Applications	ELISA, FCM, WB
Target	Xeroderma pigmentosum group C-complementing protein, p125, XPC, DNA repair protein complementing XP-C cells, XPCC
Purification	Protein A/G purified from cell culture supernatant.
Endotoxin level	Please contact with the lab for this information.
Accession	Q01831
Stability and Storage	Use a manual defrost freezer and avoid repeated freeze-thaw cycles. Store at 4°C short term (1-2 weeks). Store at -20°C 12 months. Store at -80°C long term.

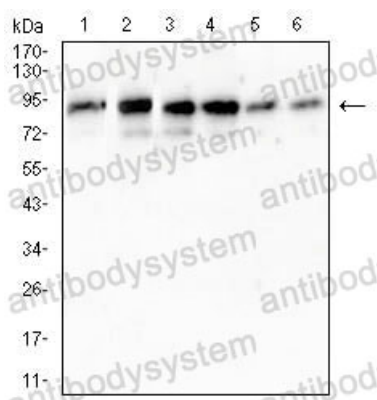
Note

For research use only.

Data Image

Flow Cytometry

Flow cytometric analysis of Hela cells using XPC mouse mAb (green) and negative control (red).



Western blot

Western blot analysis using XPC mouse mAb against SW480(1) ,A431(2) ,T47D(3) ,HT-29(4) ,A549 (5)and C2C12(6) cell lysate.