

Anti-RUNX1 Antibody (R3Q35)

Summary

Catalog No.	RHF86105
Clone ID	R3Q35
Host species	Mouse
Tested applications	ELISA: 1:10000, FCM: 1:200-1:400
Species reactivity	Human
Form	Liquid
Storage buffer	0.01M PBS, pH 7.4, 0.05% Sodium Azide.
Concentration	1 mg/ml
Purity	>95% as determined by SDS-PAGE.
Clonality	Monoclonal
Isotype	IgG1
Applications	ELISA, FCM
Target	Core-binding factor subunit alpha-2, CBF-alpha-2, CBFA2, SL3-3 enhancer factor 1 alpha B subunit, Runt-related transcription factor 1, RUNX1, Oncogene AML-1, Polyomavirus enhancer-binding protein 2 alpha B subunit, PEBP2-alpha B, SL3/AKV core-binding factor alpha B subunit, AML1, PEA2-alpha B, Acute myeloid leukemia 1 protein
Purification	Protein A/G purified from cell culture supernatant.
Endotoxin level	Please contact with the lab for this information.
Accession	Q01196

Recombinant Proteins & Antibodies

Stability and Storage

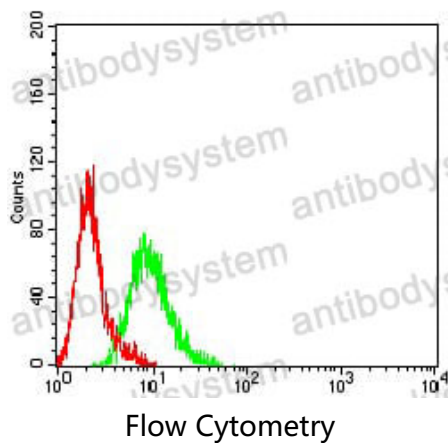
Use a manual defrost freezer and avoid repeated freeze-thaw cycles.

Store at 4°C short term (1-2 weeks). Store at -20°C 12 months. Store at -80°C long term.

Note

For research use only.

Data Image



Flow cytometric analysis of K562 cells using RUNX1 mouse mAb (green) and negative control (red).