

Anti-E2F1/RBBP3 Antibody (R3Q30)

Summary

Catalog No.	RHF85302
Clone ID	R3Q30
Host species	Mouse
Tested applications	ELISA: 1:10000, FCM: 1:200-1:400, IHC: 1:200-1:1000, WB: 1:500-1:2000
Species reactivity	Human, Mouse
Form	Liquid
Storage buffer	0.01M PBS, pH 7.4, 0.05% Sodium Azide.
Concentration	1 mg/ml
Purity	>95% as determined by SDS-PAGE.
Clonality	Monoclonal
Isotype	IgG1
Applications	ELISA, FCM, IHC, WB
Target	Retinoblastoma-binding protein 3, Retinoblastoma-associated protein 1, RBBP-3, Transcription factor E2F1, RBBP3, E2F1, E2F-1, RBAP-1, pRB-binding protein E2F-1, PBR3
Purification	Protein A/G purified from cell culture supernatant.
Endotoxin level	Please contact with the lab for this information.
Accession	Q01094

Stability and Storage

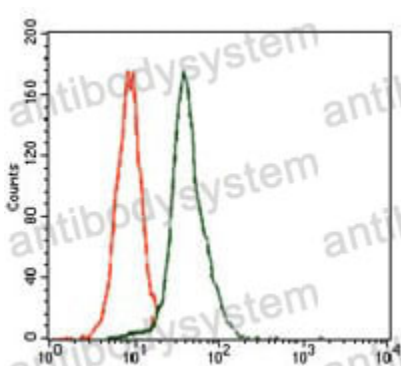
Use a manual defrost freezer and avoid repeated freeze-thaw cycles.

Store at 4°C short term (1-2 weeks). Store at -20°C 12 months. Store at -80°C long term.

Note

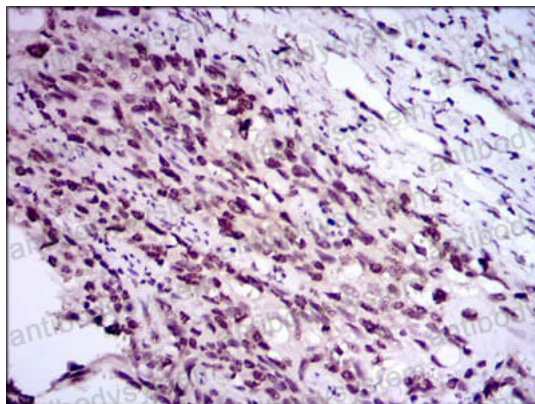
For research use only.

Data Image



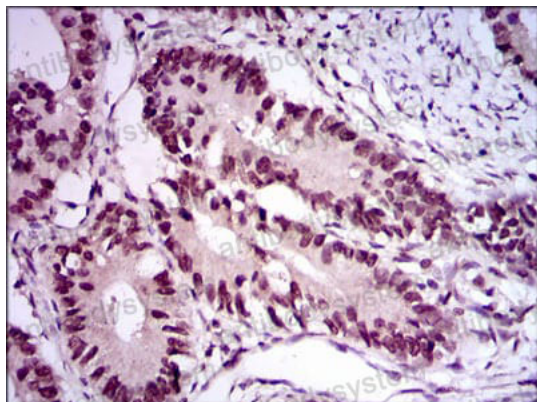
Flow Cytometry

Flow cytometric analysis of HeLa cells using E2F1 mouse mAb (green) and negative control (red).



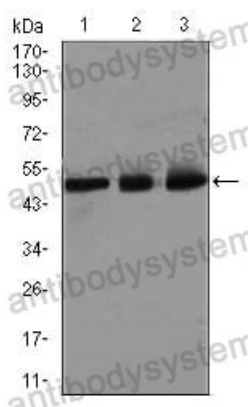
Immunohistochemical

Immunohistochemical analysis of paraffin-embedded human esophageal cancer tissues using E2F1 mouse mAb with DAB staining.



Immunohistochemical

Immunohistochemical analysis of paraffin-embedded human rectum cancer tissues using E2F1 mouse mAb with DAB staining.



Western blot

Western blot analysis using E2F1 mouse mAb against HeLa (1), SK-N-SH (2), and NIH3T3 (3) cell lysate.