

Anti-PDE1B Antibody (R3Q29)

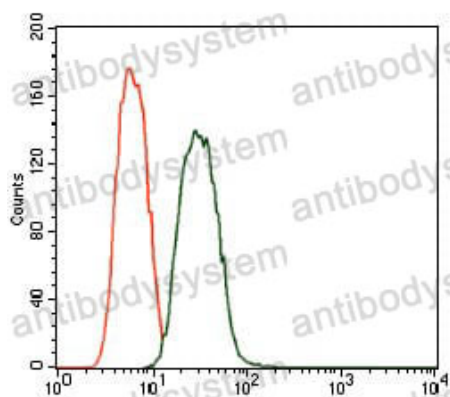
Summary

Catalog No.	RHF84903
Clone ID	R3Q29
Host species	Mouse
Tested applications	ELISA: 1:10000, FCM: 1:200-1:400, WB: 1:500-1:2000
Species reactivity	Human, Mouse, Monkey
Form	Liquid
Storage buffer	0.01M PBS, pH 7.4, 0.05% Sodium Azide.
Concentration	1 mg/ml
Purity	>95% as determined by SDS-PAGE.
Clonality	Monoclonal
Isotype	IgG1
Applications	ELISA, FCM, WB
Target	Cam-PDE 1B, PDE1B1, PDES1B, PDE1B, Calcium/calmodulin-dependent 3',5'-cyclic nucleotide phosphodiesterase 1B, 63 kDa Cam-PDE
Purification	Protein A/G purified from cell culture supernatant.
Endotoxin level	Please contact with the lab for this information.
Accession	Q01064
Stability and Storage	Use a manual defrost freezer and avoid repeated freeze-thaw cycles. Store at 4°C short term (1-2 weeks). Store at -20°C 12 months. Store at -80°C long term.

Note

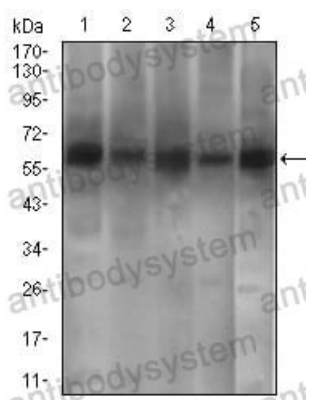
For research use only.

Data Image



Flow Cytometry

Flow cytometric analysis of A549 cells using PDE1B mouse mAb (green) and negative control (red).



Western blot

Western blot analysis using PDE1B mouse mAb against A549 (1), SK-MES-1 (2), PC-12 (4), 3T3L1 (5) cell lysate and Mouse brain (3) tissue lysate.