

# Anti-MDM2 Antibody (R3Q25)

## Summary

---

|                            |  |
|----------------------------|--|
| <b>Catalog No.</b>         | RHF84503   |
| <b>Clone ID</b>            | R3Q25  |
| <b>Host species</b>        | Mouse  |
| <b>Tested applications</b> | ELISA: 1:10000, FCM: 1:200-1:400   |
| <b>Species reactivity</b>  | Human  |
| <b>Form</b>                | Liquid   |
| <b>Storage buffer</b>      | 0.01M PBS, pH 7.4, 0.05% Sodium Azide.   |
| <b>Concentration</b>       | 1 mg/ml  |
| <b>Purity</b>              | >95% as determined by SDS-PAGE.  |
| <b>Clonality</b>           | Monoclonal   |
| <b>Isotype</b>             | IgG1   |
| <b>Applications</b>        | ELISA, FCM   |
| <b>Target</b>              | MDM2, Hdm2, p53-binding protein Mdm2, E3 ubiquitin-protein ligase Mdm2, RING-type E3 ubiquitin transferase Mdm2, Double minute 2 protein, Oncoprotein Mdm2 |
| <b>Purification</b>        | Protein A/G purified from cell culture supernatant.  |
| <b>Endotoxin level</b>     | Please contact with the lab for this information.  |
| <b>Accession</b>           | Q00987   |

**Stability and Storage**

Use a manual defrost freezer and avoid repeated freeze-thaw cycles.

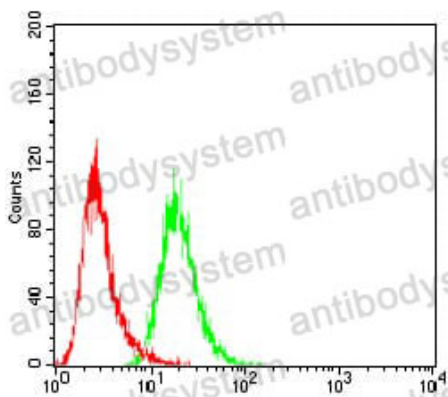
Store at 4°C short term (1-2 weeks). Store at -20°C 12 months. Store at -80°C long term.

**Note**

For research use only.

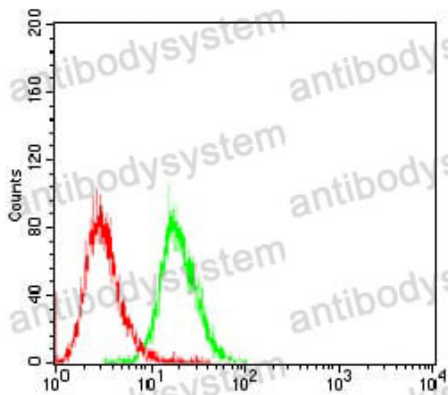
**Data Image**

---



Flow Cytometry

Flow cytometric analysis of HeLa cells using MDM2 mouse mAb (green) and negative control (red).



Flow Cytometry

Flow cytometric analysis of Jurkat cells using MDM2 mouse mAb (green) and negative control (red).