

Anti-PLCB2 Antibody (R3Q19)

Summary

Catalog No.	RHF83302
Clone ID	R3Q19
Host species	Mouse
Tested applications	IHC: 1:50-1:200
Species reactivity	Human
Form	Liquid
Storage buffer	0.01M PBS, pH 7.4, 0.05% Sodium Azide.
Concentration	1 mg/ml
Purity	>95% as determined by SDS-PAGE.
Clonality	Monoclonal
Isotype	IgG1
Applications	IHC
Target	PLCB2, Phospholipase C-beta-2, PLC-beta-2, Phosphoinositide phospholipase C-beta-2, 1-phosphatidylinositol 4,5-bisphosphate phosphodiesterase beta-2
Purification	Protein A/G purified from cell culture supernatant.
Endotoxin level	Please contact with the lab for this information.
Accession	Q00722

Recombinant Proteins & Antibodies

Stability and Storage

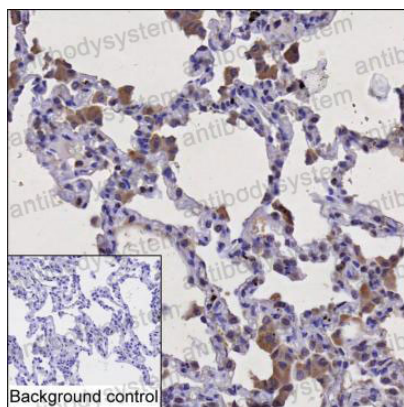
Use a manual defrost freezer and avoid repeated freeze-thaw cycles.

Store at 4°C short term (1-2 weeks). Store at -20°C 12 months. Store at -80°C long term.

Note

For research use only.

Data Image



Immunohistochemical

IHC-P analysis of lung tissue by PLCB2 antibody (RHF83302). IHC-P was performed using sections of the formalin-fixed paraffin-embedded lung tissue; Result: Macrophages cells are positively stained at the cytoplasm.